

Top cover of small busbar of high voltage switchgear



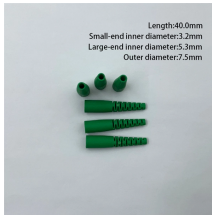
Top cover of small busbar of high voltage switchgear



Gala Bus Connection Insulating covers are designed to protect energized conductors or busbar from flashovers due to contact from birds, squirrels and other wildlife.



The small busbar at the top of the high-voltage cabinet specifically refers to the busbars used for signal transmission and auxiliary power supply between various components inside the high-voltage ...



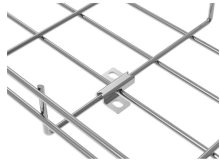
Learn how electrical busbars and protective busbar covers enhance power distribution safety, efficiency, and reliability in modern electrical systems.



In summary, the bus bar is the backbone of the switchboard—its design directly impacts reliability, safety, and performance of the entire system. With this understanding, let us now look at ...



Laminated busbars reduce loop inductance and can improve thermal performance in compact, high-current, high-harmonic environments. They cost ...



Looking for a safe, efficient, and standards-compliant busbar solution for your switchgear project? Our engineering team can help you choose the right materials, layout, and design based on ...



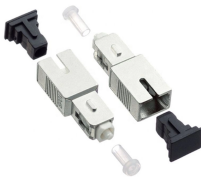
These bars are tin-plated copper and have stainless steel terminals. Also known as bus bars, they serve as connection points between wires with ring or spade terminals. The underside is sealed, so the ...



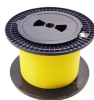
They can be used on bare busbars, switchgear connections, substations and other electrical equipment. Our BMOD covers allow equipment designers to reduce air spacings between busbars when used in ...



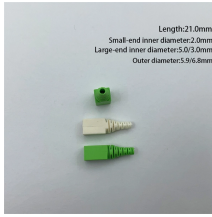
Laminated busbars reduce loop inductance and can improve thermal performance in compact, high-current, high-harmonic environments. They cost more and need careful interface ...



Three high-voltage compartments are fitted with secured pressure relief plates located at the top (NO. 1.1,1.2,1.3 in Figure 3/1). They will open upward if internal arc faults result in overpressure.



The use of busbar for switchgear goes back to the dawn of electricity generation and is very common in both residential load centers of 200A and less and in industrial motor control center (MCC) ...



Busways, or bus ducts, are long busbars with protective covers. Rather than branching from the main supply at one location, they allow new circuits to branch ...



Medium-voltage switchgear 8DA/B is indoor, factory-assembled, type-tested, single-pole metal-enclosed, gas-insulated switchgear, for single-busbar and double-busbar applications, as well as for ...

Contact Us

For more information, pricing, or custom network solutions, please contact us:

Website: <https://www.hashherbcafe.co.za>

Email: hello@hashherbcafe.co.za

Phone: +27 63 814 7295

Address: 15 Galaxy Road, Linbro Business Park, Johannesburg, 2065, South Africa

This document is for informational purposes only. Specifications subject to change without notice.

