

Tonga Lighting Distribution Box Dimensions Diagram



Tonga Lighting Distribution Box Dimensions Diagram



Product Structure and Dimensions. The XL-21 type low-voltage power distribution cabinet is an indoor wall-mounted, single-sided front-opening distribution device. Its basic structure is made of bent steel ...



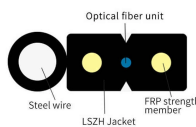
Advancement in technology has resulted in smaller size, better performance and improved design. BAHRA Load Centers are used for safe and reliable distribution of electrical power for indoor ...



A comprehensive reference database of dimensioned drawings documenting the standard measurements and sizes of the everyday objects and spaces that make up our world. Scaled 2D ...



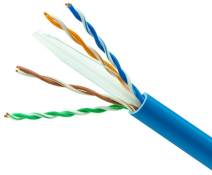
Plastic Electrical Box, also known as a consumer control unit or electricity control unit. It is a device that is a type of distribution board that helps in protecting ...



Each motor circuit is equipped with two lights, two buttons, and one changeover switch; one contactor is less than A50. One thermal overload relay; and there are 20 terminals. The dimensions should be ...



At the very core of its design our Lighting Distribution Box fulfils the requirements of BS 5733. It's a longstanding, onerous British Standard written to ensure devices are able to withstand the day to day ...



TONGA LEVEL 1 DISTRIBUTION BOX Datasheet. Part #: TON15. Datasheet: 220Kb/3P. Manufacturer: TRACO Electronic AG. Description: DC/DC Converters TON 15 Series, 15 Watt. 45 Results. Part #: ...



Distribution boxes, also known as DB boxes, serve as critical components in electrical systems by distributing electrical power safely and efficiently to various circuits within a building.



JXF Series Power Distribution Box product is box assembled with various control functions by customer-selected components, and there are many box sizes and specifications and the size of ...



The tenderer shall submit detailed constructional and dimensional drawing of complete distribution box with details of Porcelain Fuse Units and Composite stud fuse units, incoming and out going circuit ...



General Technical Particulars for LT Distribution Boxes : - The L.T. Distribution Boxes should be of the dimensions as per the drawing & details in the table furnished.



This document provides a summary of the key components of an LT distribution box suitable for 100KVA transformers. It includes 6 holes of 50mm diameter for cable exits and rubber gaskets.

Contact Us

For more information, pricing, or custom network solutions, please contact us:

Website: <https://www.hashherbcafe.co.za>

Email: hello@hashherbcafe.co.za

Phone: +27 63 814 7295

Address: 15 Galaxy Road, Linbro Business Park, Johannesburg, 2065, South Africa

This document is for informational purposes only. Specifications subject to change without notice.

