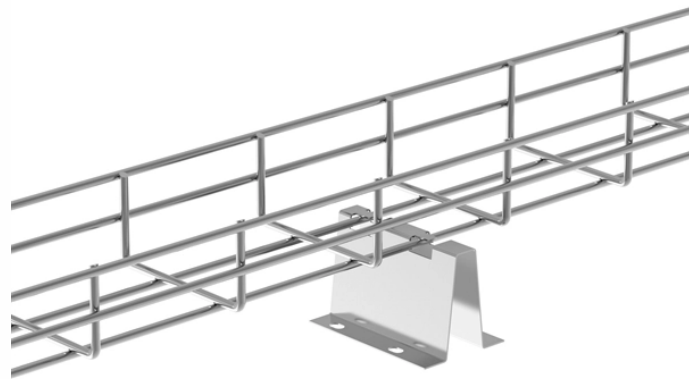


Tonga Fiber Optic Patch Cord Processing Factory



Overview

Our company specializes in the research, development, and production of high-performance optical communication components, particularly focusing on precision fiber optic adapters, patch cords (including MPO/MTP connectors), and innovative zirconia ceramic ferrule. Our company specializes in the research, development, and production of high-performance optical communication components, particularly focusing on precision fiber optic adapters, patch cords (including MPO/MTP connectors), and innovative zirconia ceramic ferrule. We provide high-performance connectivity solutions that power digital transformation across industries worldwide. At TTI Fiber, 15+ years of expertise in high-performance optical solutions — empowering global networks with precision and quality. Complete hardware sets for Fiber to the Home. Tonga Cable System is a submarine fiber-optic cable system connecting Tonga with Fiji, where it connects to other international networks. It is 827 kilometres (514 mi) long and was activated in 2013. It has cable landing points at Sopo, a suburb of Nuku'alofa in Tonga, and Suva, Fiji. You can use them to construct horizontal and building backbone cabling subsystems for yourSCS. Standard. Tonga has a population of about 102,000

and a high adult literacy rate of 99.

Tonga Fiber Optic Patch Cord Processing Factory



It has cable landing points at Sopu, a suburb of Nuku'alofa in Tonga, and Suva, Fiji. The project was funded by Asian Development Bank and the World Bank.



Tonga Cable System is a submarine fiber-optic cable system connecting Tonga with Fiji, where it connects to other international networks. It is 827 kilometres (514 mi) long and was activated in 2013. It has cable landing points at Sopu, a suburb of Nuku'alofa in Tonga, and Suva, Fiji. The project was funded by Asian Development Bank and the World Bank. An extension of the cable to Ha'apai and Vava'u was commissioned in April 2018.



Tonga Cable Limited (TCL) owns and manages the fibre-optic submarine cable, connecting Tonga to Fiji, which was commissioned in August 2013. The cable cost was around T\$36 million and was ...



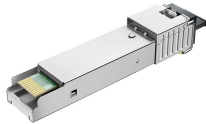
Fibconet is a professional manufacturer of fiber optic patch cords. Our factory can provide high-quality custom patch cords in large quantities with timely delivery.



Our company specializes in the research, development, and production of high-performance optical communication components, particularly focusing on precision fiber optic adapters, patch cords ...



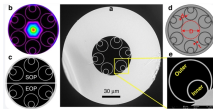
We have our own fiber optic cable factory, integrating R& D, production and manufacturing optic fiber cable. We have more than 30 fiber optic cable production lines and 6 fiber optic patch cord ...



Tonga Cable Limited was formed in November 2009, with approval of Government of Tonga, to build and manage a submarine fibre optic cable to connect Tonga to an international network...



The Tonga-Fiji Submarine Cable System is owned and operated by the state-owned Tonga Cable Limited (TCL), which was set up in 2011 to develop, and manage the submarine cable with financing ...



Tonga Power has a plan for carrying fiber-optic cables on its power poles and offering wholesale capacity to interested parties. It would provide new ISPs with the infrastructure needed to enter the ...

Contact Us

For more information, pricing, or custom network solutions, please contact us:

Website: <https://www.hashherbcafe.co.za>

Email: hello@hashherbcafe.co.za

Phone: +27 63 814 7295

Address: 15 Galaxy Road, Linbro Business Park, Johannesburg, 2065, South Africa

This document is for informational purposes only. Specifications subject to change without notice.

