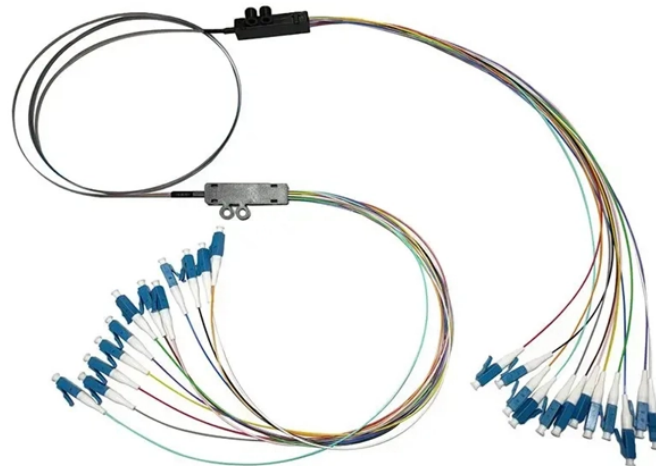


Thickness of Concealed Distribution Box



Overview

The height should be the height of the switches plus 40 millimeters, and the depth should be the maximum depth of the switches plus 10 millimeters. The distribution box shall be embedded in the wall. All these types of boxes serve specific purposes ion of communication devices (cable TV, telephone. The cubic capacity of the box. Household distribution boxes are essential components in modern electrical systems, providing a centralized location for managing electrical circuits within a home. While many families are familiar with these boxes, there is often a lack of understanding regarding their specifications and proper. The floor cabinet is made of 2. 5mm thick cold-rolled steel plate. The surface installation distribution box, which is mounted on the wall, the foot bolt (tube expansion bolts) fixed, bolt length is generally buried depth (75 ~ 150mm), box bottom plate thickness, the thickness of the nut and washer, plus. IEC 62262 IK10.

Thickness of Concealed Distribution Box



Engineered for modern electrical and solar installations, the Concealed Distribution Box 10×14 provides a reliable, sleek solution for safe circuit management. Ideal for embedding into walls, this flush-mount ...



The surface installation distribution box, which is mounted on the wall, the foot bolt (tube expansion bolts) fixed, bolt length is generally buried depth (75 ~ 150mm), box bottom plate ...



When building the wall, the reserved hole should be about 20 mm larger than the length and width of the distribution box, and the reserved depth is the thickness of the distribution box plus ...



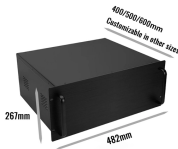
Wires in the distribution board must not protrude beyond the board. The distribution boards you use must be appropriate for your needs and must not have more connections than the board's restricted ...



If the thickness of concealed box plate is less than 3mm, a full length -- 40 × 4 galvanized flat steel shall be attached at the back of the left side of the box, and the two ends shall be 15cm longer than the box.



The distribution box should be affixed using expansion bolts. The length of the bolts should account for the depth of the wall (75-150 millimeters), the thickness of the box's base, and the ...



1/2 MODULE.



Metal Distribution Box Features Continuously welded seams Foam-in-place seamless gasket 120-degree opening heavy-duty industrial hinges IP66 protection rating against dust and water according ...



The reserved depth is the thickness of the distribution box plus the thickness of the plastering on the inner wall of the hole. When the distribution box is buried by masonry, the box can ...



The distribution box should be affixed using expansion bolts. The length of the bolts should account for the depth of the wall (75-150 millimeters), the thickness of the box's base, and the ...



Where ganged sectional boxes are used, they shall be secured to metal supports or to wooden boards at least 19 mm thick that are rigidly secured to the structural units.

Contact Us

For more information, pricing, or custom network solutions, please contact us:

Website: <https://www.hashherbcafe.co.za>

Email: hello@hashherbcafe.co.za

Phone: +27 63 814 7295

Address: 15 Galaxy Road, Linbro Business Park, Johannesburg, 2065, South Africa

This document is for informational purposes only. Specifications subject to change without notice.

