

The value of disassembling a beam splitter



The value of disassembling a beam splitter



Beam splitters are devices for splitting a laser beam into two or more beams. There are different types, including polarizing and non-polarizing versions.



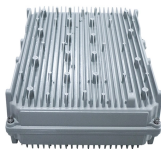
These beamsplitters can separate components of a laser beam based on wavelength, or to truly combine different wavelengths (or bands) with minimal loss, and are thus suitable for high power ...



Beamsplitters are fundamental components in optical engineering, serving to precisely divide a single input beam of light into two distinct output beams. This division allows for the ...



From a collimated input beam, the output beams exit from Beam Splitter DOE with a separation angle that is determined during the design of the DOE based on the customer's system requirements (See ...



A beam splitter or beamsplitter is an optical device that splits a beam of light into a transmitted and a reflected beam. It is a crucial part of many optical experimental and measurement systems, such as ...



You don't have to ever do this but if you want to, here's how!



The smaller the losses the more difficult is the splitter characterization, so the specifications of the commercial or custom filter must be carefully ...



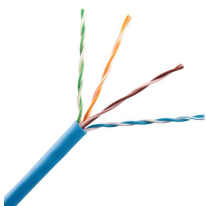
On ram-type log splitters, never attempt to split more than one (1) log at a time unless the ram has been fully extended and a second log is needed to complete the separation of the first log.



The elements of the beam splitter transformation matrix B are determined using the assumption that the beamsplitter is lossless. While a beamsplitter is never lossless, it is a good approximation for most ...



To split wood in the vertical position, release the pin on the beam latch located on the front end of the beam. Carefully tilt the beam up until the foot plate is sitting squarely on the ground and the log ...



These two screws are beamsplitter "blockers". Then slide metal wing side DOWN. You will see beamsplitter. Then unscrew two fat screws which holds beamsplitter (you will easily notice them ...

Contact Us

For more information, pricing, or custom network solutions, please contact us:

Website: <https://www.hashherbcafe.co.za>

Email: hello@hashherbcafe.co.za

Phone: +27 63 814 7295

Address: 15 Galaxy Road, Linbro Business Park, Johannesburg, 2065, South Africa

This document is for informational purposes only. Specifications subject to change without notice.

