

## The silver-gray fiber optic panel with dual holes appears below



### Overview

The QSFPTEK fiber patch panel (single-mode/multimode) is designed especially for use with 1U 19" modular rack-mount enclosure or wall mount enclosure. The fiber panel is pre-terminated with 12 LC duplex connectors that work with both multimode OM3/OM4 and single-mode OS1/OS2. NG4access<sup>®</sup> Cabled Modules available in all module sizes and fiber counts up to 864 fibers NG4access<sup>®</sup> Splice Tray Four sizes of interchangeable Propel fiber pass-through adapter packs provide the breadth of capabilities for virtually any configuration. Four sizes of interchangeable Propel fiber. Patch fiber optic panel is used to terminate fiber optic cables and switch fiber links. A bulk (multi-strand) fiber cable enters the patch panel and then each fiber strand is separated into individual strands or pairs of strands. Fiber optic network design refers to the specialized processes leading to a successful installation and operation of a fiber optic network. Navy surface ships and submarines. The methods specified herein are not identifiable to any specific.

## The silver-gray fiber optic panel with dual holes appears below



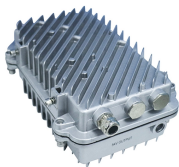
Patch fiber optic panel is used to terminate fiber optic cables and switch fiber links. The switch is designed for mounting in 19" racks and racks. The pull-out design provides easy access to the inside ...



A technical guide on choosing the best Fiber Patch Panel to install & terminate fiber optic cable for any indoor/outdoor industrial communication project.



Explore CommScope's efficient and scalable fiber splice panels designed for seamless connectivity. Accommodating LC, SC, and MTP/MPO connectors, these panels are ideal for data centers, ...



Find out everything you need to know about fiber patch panels, from connector types to high-density configurations. Choose the best panel for your optic network.



The fiber optic patch panel, also known as the fiber distribution panel, serves as the crucial component of the management of fiber optic cables. It is usually a metal panel consisting of ...



We recommend you review the FOA Guide sections on fiber optic installation ...



A technical guide on choosing the best Fiber Patch Panel to install & terminate fiber optic cable for any indoor/outdoor industrial communication project.



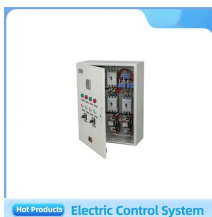
We recommend you review the FOA Guide sections on fiber optic installation covering basic fiber installation and OSP fiber installation. Designing a network requires working with other personnel ...



This NAVSEA Drawing provides detailed information and guidance to personnel concerned with the installation of fiber optic cable topologies (fiber optic cabling and associated components)...



Patch fiber optic panel is used to terminate fiber optic cables and switch fiber links. The switch is designed for mounting in 19" racks and racks. The pull-out design provides easy access to the inside ...



In the simplest terms, the fiber patch panel is an array of ports on one panel, which helps organize a group of fiber cables. Fiber patch panels can interconnect pre-terminated products.



In addition to the options listed above, we also supply all of the additional items needed to complete your fiber optic network. Listed below are several item categories that fit with the end-to-end requirements ...



While they may look similar, a FOBOT is more advanced than a fibre optic patch panel. The fibre patch panel may only feature simple holes where the cables are terminated, whereas a FOBOT comes with ...

## Contact Us

For more information, pricing, or custom network solutions, please contact us:

Website: <https://www.hashherbcafe.co.za>

Email: [hello@hashherbcafe.co.za](mailto:hello@hashherbcafe.co.za)

Phone: +27 63 814 7295

Address: 15 Galaxy Road, Linbro Business Park, Johannesburg, 2065, South Africa

This document is for informational purposes only. Specifications subject to change without notice.

