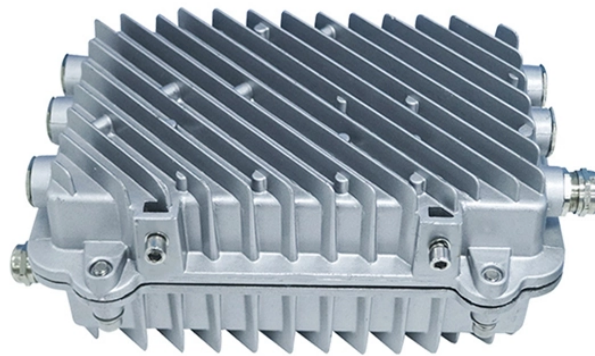


The optical fiber display box collapsed

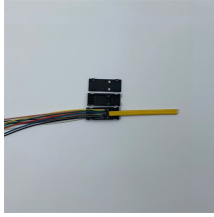


Overview

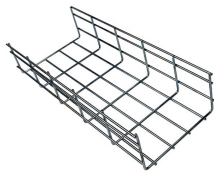
The most common causes of this are loss of power to the fiber terminal (ONT) or an unplugged network cable. When your internet or TV isn't working, the ONT might be the cause. You don't need to. Fiber optic troubleshooting is an essential skill for network administrators, technicians, and engineers responsible for maintaining and repairing fiber optic systems. Many fiber internet problems come from dirty connectors or loose plugs, not major faults. Your ONT is typically located in your garage, basement or outside your home within a few feet of your home's power box. Before troubleshooting your ONT, we recommend. Troubleshoot your fiber connection Having trouble with your CenturyLink Fiber internet connection?

There are a few things you can check before you contact us for help. This guide will walk you through diagnosing and resolving common.

The optical fiber display box collapsed



Troubleshoot fiber optic issues like a pro with our expert guide. Resolve common problems and ensure seamless connectivity.



Check to see if any electrical breakers or outlets with circuit breakers in them have been tripped. If your fiber terminal was installed in your garage or outside your home, it's likely that it plugs into a ground ...



Learn how to troubleshoot fiber networks. Identify common issues like high loss, dirty connectors, and signal drops, with practical solutions for optical links.



The ONT, or Optical Network Terminal, is the box where your fiber internet connection enters your home. Rebooting your ONT is also known as Power cycling.



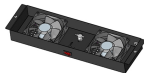
Solve common fiber optic network problems—attenuation, damage, connector issues. Learn troubleshooting steps, tools, and prevention to ensure reliable connectivity.



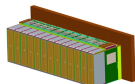
Solve fiber troubleshooting issues fast with step-by-step tips for beginners. Keep your fiber optic network reliable and fix common internet problems easily.



For Verizon ONT troubleshooting, contact Verizon Support when experiencing internet connection issues or if the ONT device displays error lights. Prompt help ensures minimal downtime.



Having issues with your fiber internet and need help troubleshooting your ONT? We provide step-by-step guidance to get your internet back up and running.



Optical Network Terminal (ONT) troubleshooting guide: Tackling common glitches, step-by-step fixes, and preventive care for fiber-optic internet.

Contact Us

For more information, pricing, or custom network solutions, please contact us:

Website: <https://www.hashherbcafe.co.za>

Email: hello@hashherbcafe.co.za

Phone: +27 63 814 7295

Address: 15 Galaxy Road, Linbro Business Park, Johannesburg, 2065, South Africa

This document is for informational purposes only. Specifications subject to change without notice.

