

# The function of a floor-level beam splitter



## Overview

The device is purely passive, redirecting light energy based on carefully engineered surface properties. Beamsplitters enable complex light manipulation across diverse scientific and industrial fields, underpinning numerous advanced optical systems. It is a crucial part of many optical experimental and measurement systems, such as interferometers, also finding widespread application in fibre optic telecommunications. It operates based on the principles of reflection and refraction. These tools can split both laser and regular light. A beamsplitter can also combine two incoming beams from different angles into a single output. a laser beam) into two (or sometimes more) beams, which may or may not have the same optical power (radiant flux). Different types of beam splitters exist, as described in the. Beamsplitters are fundamental components in optical engineering, serving to precisely divide a single input beam of light into two distinct output beams. This division allows for the simultaneous analysis or utilization of the light's properties along two separate paths.

## The function of a floor-level beam splitter



The most basic function of a beam splitter is to divide an incoming light beam into two or more beams with specific intensity ratios. This allows for the creation of multiple light paths, which is ...



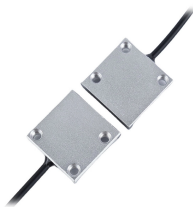
They allow the beam to be divided into segments that can be diverted individually with other inputs, offering more options for directing and shaping the light beam.



These devices, often integrated into small planar light circuit chips, function as a photon router, managing the flow of data across vast networks. They are also found in various sensing ...



To reduce loss of light due to absorption by the reflective coating, so-called "Swiss-cheese" beam-splitter mirrors have been used. Originally, these were sheets of highly polished metal ...



A beam splitter (or beamsplitter, power splitter) is an optical device which can split an incident light beam (e.g. a laser beam) into two (or sometimes more) beams, which may or may not have the same ...



A beam splitter or beamsplitter is an optical device that splits a beam of light into a transmitted and a reflected beam. It is a crucial part of many optical experimental and measurement systems, such as ...



They are designed to split unpolarized light at a specific Reflection/Transmission (R/T) ratio with unspecified polarization tendencies. Polarizing beamsplitters are designed to split light into reflected ...



Beam Splitter is a diffractive optical element (DOE) used to split a single laser beam into several beams, each with the characteristics of the original beam (except for power and angle of propagation).



A conventional beam splitter is an optical component used to divide an incident beam into two or more beams by refracting or reflecting it. In contrast, artificial nanostructures of metasurfaces provide ...



In cameras and projectors, beam splitters direct light paths, enabling functions like autofocus or color separation to create full-color images. They route light to different sensors or through various filters.

## Contact Us

For more information, pricing, or custom network solutions, please contact us:

Website: <https://www.hashherbcafe.co.za>

Email: [hello@hashherbcafe.co.za](mailto:hello@hashherbcafe.co.za)

Phone: +27 63 814 7295

Address: 15 Galaxy Road, Linbro Business Park, Johannesburg, 2065, South Africa

This document is for informational purposes only. Specifications subject to change without notice.

