

The fiber optic interface type of the SFP optical module is



Overview

For optical modules, the SFP contains a TOSA (Transmit Optical Subassembly) and ROSA (Receive Optical Subassembly) to handle the fiber signal. For copper SFP modules (RJ-45), the module integrates the necessary PHY and magnetics to convert electrical signals. Small Form-factor Pluggable (SFP) is a compact, hot-pluggable network interface module format used for both telecommunication and data communications applications. This post will introduce everything you should know about SFP transceivers, including what is SFP, how an SFP work, what are the types of SFP modules and SFP variants, etc. What is An SFP Module?

SFP means Small Form-factor. In the realm of modern networking, Small Form-Factor Pluggable (SFP) modules have emerged as indispensable components, enabling high-speed data transmission across fiber optic and copper networks.

The fiber optic interface type of the SFP optical module is



SFP module is a compact, hot-pluggable optical transceiver module, which is widely used for both telecommunication and data communications applications. It is also known as small form ...



The main difference among the SFP modules is their classification according to data rate, transmission distance, and optical fiber type: single mode (SMF) or multimode (MMF).



An SFP module is a small, pluggable optical transceiver that fits into the SFP port of a networking switch or other device. Sometimes, it is known as the mini-GBIC (gigabit interface ...



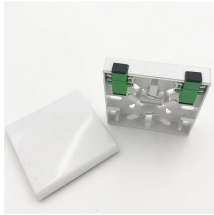
Small Form-factor Pluggable (SFP) is a compact, hot-pluggable network interface module format used for both telecommunication and data communications applications.



SFP (Small Form-factor Pluggable) is a compact, hot-pluggable network interface module used to connect network devices (switches, routers, firewalls) to fiber optic or copper cables.



The main difference among the SFP modules is their classification according to data rate, transmission distance, and optical fiber type: single mode ...



In the realm of modern networking, Small Form-Factor Pluggable (SFP) modules have emerged as indispensable components, enabling high-speed data transmission across fiber optic ...



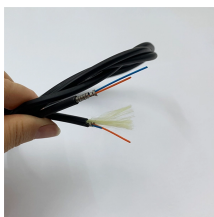
- Single-mode SFP module: Refers to the SFP modules that work with single-mode optical fiber cables. Single-mode fiber cable is designed to transmit ...



- Single-mode SFP module: Refers to the SFP modules that work with single-mode optical fiber cables. Single-mode fiber cable is designed to transmit only a single mode of light with ...



For optical modules, the SFP contains a TOSA (Transmit Optical Subassembly) and ROSA (Receive Optical Subassembly) to handle the fiber signal. For copper SFP modules (RJ-45), ...



SFP modules can operate over both optical fiber and Ethernet cables, leading to the two main types: fiber SFP and copper SFP. Copper SFP: These use copper cables for data transmission ...



SFP stands for Small Form-Factor Pluggable, a compact, hot-pluggable interface used universally in switches, routers, and firewalls. This technology has continuously evolved, scaling from ...

Contact Us

For more information, pricing, or custom network solutions, please contact us:

Website: <https://www.hashherbcafe.co.za>

Email: hello@hashherbcafe.co.za

Phone: +27 63 814 7295

Address: 15 Galaxy Road, Linbro Business Park, Johannesburg, 2065, South Africa

This document is for informational purposes only. Specifications subject to change without notice.

