

The fiber optic cable is being throttled by the router



Overview

They're usually related to the WiFi router, rather than the fiber connection itself. Fortunately, most of these are pretty simple to troubleshoot, diagnose, and fix. Fiber optic networks are celebrated for their speed and reliability, but even the best systems can encounter problems. This guide will walk you through diagnosing and resolving common. Does the type of internet connection (cable, DSL, fiber) affect throttling?

Is it possible to detect throttling on a public Wi-Fi network?

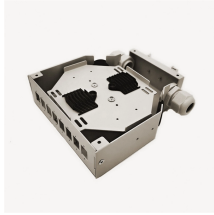
How Can You Tell If Your Internet Is Being Throttled?

Is your internet speed inexplicably slow, even though you're paying for a fast connection?

Determining. But, there are still a few potential issues that can cause even a fiber optic connection to slow down abnormally. We've identified. A VPN can bypass ISP throttling and help you get back the faster speeds you're actually

paying for. A VPN uses encryption to hide your traffic from your ISP, preventing them from slowing your internet when you stream Netflix or play games.

The fiber optic cable is being throttled by the router



A faulty router or modem (overheating, outdated firmware, or cheap hardware) could also be to blame. All of these are valid concerns, which is why it is essential to determine whether your ...



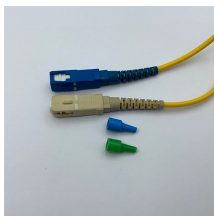
Learn how to tell if your internet is being throttled and what steps you can take to stop it from ruining your online experience.



Fiber optic troubleshooting is the systematic process of identifying, diagnosing, and resolving problems within fiber optic communication networks. ...



What you're experiencing is internet "throttling" -- when your internet temporarily slows down -- and the culprit is usually data limits or congestion on the network.



Yes — an overloaded router, outdated firmware, or misconfigured DNS settings can all produce speed drops that resemble throttling. Before blaming your ISP, try resetting your router to ...



Let's troubleshoot your internet connection first to absolutely rule out other possibilities: Restart your router properly, check that the router is centrally located in your home, reposition...



WebTelecoms Cabling

“To troubleshoot fiber network issues, start by inspecting physical connections, testing signal strength, and verifying device functionality. Use OTDR for advanced diagnostics and resolve ...



Ensure your router's firmware is up-to-date, and consider replacing it if it's old or not performing well. Also make sure the router is configured to handle your advertised speeds.



Learn how to troubleshoot fiber networks. Identify common issues like high loss, dirty connectors, and signal drops, with practical solutions for optical links.



But, there are still a few potential issues that can cause even a fiber optic connection to slow down abnormally. They're usually related to the WiFi router, rather than the fiber connection ...

Contact Us

For more information, pricing, or custom network solutions, please contact us:

Website: <https://www.hashherbcafe.co.za>

Email: hello@hashherbcafe.co.za

Phone: +27 63 814 7295

Address: 15 Galaxy Road, Linbro Business Park, Johannesburg, 2065, South Africa

This document is for informational purposes only. Specifications subject to change without notice.

