

## The earliest cable tray



## The earliest cable tray



They are especially useful in situations where changes to a wiring system are anticipated, since new cables can be installed by laying them in the tray, instead of pulling them through a pipe.

Mesh door/glass door optional

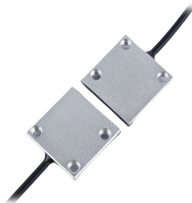


Sp-601 glass door Sp-602 mesh door

This wire basket became the first metal cable tray, a design that addressed the issues of accessibility, safety, and efficiency. Halpern's invention allowed for easy installation and ...



Early cable trays were constructed from steel, offering much-needed organization and protection for electrical systems in industrial environments. Over time, cable tray designs evolved to include lighter, ...



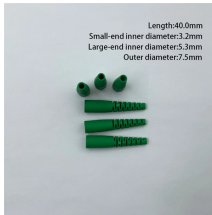
As electrification accelerated, engineers began to design more efficient cable support systems: 1920s: American companies such as General Electric (GE) experimented with metal tray ...



The modular cable tray is a new type of cable tray, the second generation in the cable tray series. It is suitable for various projects, units, and cable installations.



The term "cable tray" was first used in the early 1900s in the United States, when electricians began using trays to organize and protect electrical wiring. Cable trays were originally made of metal, and ...



The technology of cable tray has been widely used, changing the phenomenon of single steel welding and assembling cable support in China in the past, creating a precondition for the ...



Cable tray, introduced in the mid 1940s, is a safe and economical solution for supporting requirements of electric power, signal, control, instrumentation and communication cables.



The traditional two-side rail cable tray product offering is the core of the domestic cable tray industry. New systems are being developed to satisfy more specific customer needs. Channel type cable ...

## Contact Us

For more information, pricing, or custom network solutions, please contact us:

Website: <https://www.hashherbcafe.co.za>

Email: [hello@hashherbcafe.co.za](mailto:hello@hashherbcafe.co.za)

Phone: +27 63 814 7295

Address: 15 Galaxy Road, Linbro Business Park, Johannesburg, 2065, South Africa

This document is for informational purposes only. Specifications subject to change without notice.

