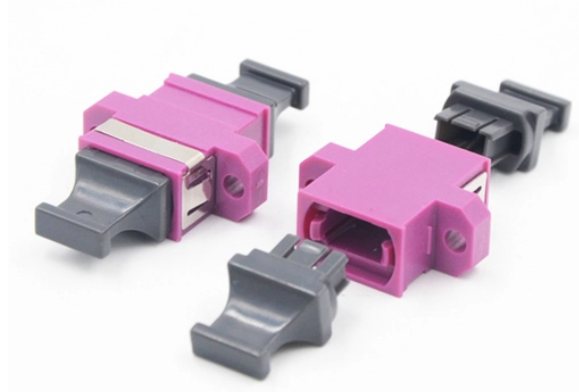


The cable fell out of the cable tray



Overview

A common but often overlooked safety hazard is the falling off of cable tray covers. This issue can lead to potential injury, equipment damage, or service disruptions. This article analyzes the main causes of cable tray cover detachment and provides practical. The entire cable line is completely burned or one of the phases is damaged, causing all the current relays on the distribution cabinet to activate. Short circuits occur in all phases of the cable, which will also trigger the interlocking. However, like any other infrastructure, cable trays are prone to failures that can result in serious safety hazards, financial losses, and downtime. Cable Exit Clip/Dropout Waterfall for.

The cable fell out of the cable tray



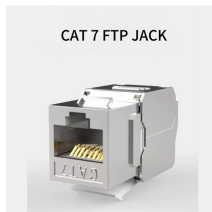
Learn about common cable tray failures, their causes, and practical solutions for ensuring the longevity and safety of your cable tray system, including ...



Learn about common cable tray failures, their causes, and practical solutions for ensuring the longevity and safety of your cable tray system, including corrosion, cracks, and grounding issues, ...



Follow cable fill limits specified in cable tray design standards. Ensure continuous grounding connections along the metal cable tray to the building's earthing system.



A common but often overlooked safety hazard is the falling off of cable tray covers. This issue can lead to potential injury, equipment damage, or service disruptions. This article analyzes the main causes ...



Here we introduce various types of faults that may occur in cable trays and their solutions in details, hoping we can help you in some way.



- Double insulation is to be provided on the cables and proper cable management is to be ensured.
- All the work shall be carried on under supervision.
- The area shall be properly ...



This SmartRack® exit clip helps reduce bend-induced stress, pinching, pressure points and fatigue in your wire mesh cable tray system. It mounts to the cross member of the tray to route copper cables ...



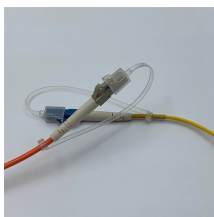
The Standard Dropout (SDO) offers stronger cable support and creates a seamless transition for your cables over the side of your wire mesh tray without any cutting.



However, like any other infrastructure, cable trays are prone to failures that can result in serious safety hazards, financial losses, and downtime. In this article, we will discuss the two basic ...



It highlights the hazards associated with overloaded cable trays, including tray collapse, electric shock, and cable damage, and provides best practices to ...



Follow cable fill limits specified in cable tray design standards. Ensure continuous grounding connections along the metal cable tray to the building's ...



This comprehensive guide investigates the most frequent wire management challenges faced in real-world setups and demonstrates how the correct cable tray accessories may address them.



It highlights the hazards associated with overloaded cable trays, including tray collapse, electric shock, and cable damage, and provides best practices to prevent accidents.

Contact Us

For more information, pricing, or custom network solutions, please contact us:

Website: <https://www.hashherbcafe.co.za>

Email: hello@hashherbcafe.co.za

Phone: +27 63 814 7295

Address: 15 Galaxy Road, Linbro Business Park, Johannesburg, 2065, South Africa

This document is for informational purposes only. Specifications subject to change without notice.

