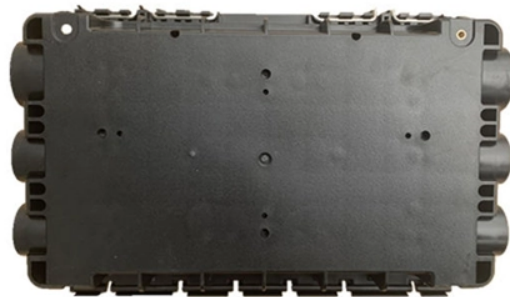


The Phicomm K2 router has an optical fiber port



Overview

The router offers 867 Mbps on 5GHz and 300 Mbps on 2.4GHz, categorizing it as an AC1200 class device. Connectivity: It includes 4 LAN ports and 1 WAN port, all supporting Gigabit speeds. See OpenWrt on 8/64 devices what you can do now. ath79: add support for Phicomm K2T This patch adds dts for qca956x and also support for Phicomm K2T The qca965x. dtsi adds nearly all the necessary components. Both ath9k AHB and PCIe worked well. The Phicomm K2T uses MTD partition 'config' to store. Hardware Details: The Phicomm K2P (A1) is a wireless router released around June 2017, manufactured in China. It features a MediaTek MT7621AT CPU (880 MHz, 2 cores), 16 MiB of flash memory, and 128 MiB of RAM. Wireless Capabilities: It supports 802.11ac. It has five Fast Ethernet ports, later revisions featuring five Gigabit Ethernet ports, and a moderately fast processor. By continuing, I agree to the and authorize you to charge my payment method at the prices, frequency and dates listed on this page. It delivers dual-band AC1200 speeds (300 Mbps on 2.4GHz and 800Mbps on 5GHz) and "V1.0".

The Phicomm K2 router has an optical fiber port



Discover the phicomm k2 router's specs, including dual-band AC1200 performance, 4 external antennas, and OpenWrt support. Click to explore its capabilities and find the best deals for 2025.

8-Port PLC Fiber Splitter Box
12-Port SC Fiber Splitter Box



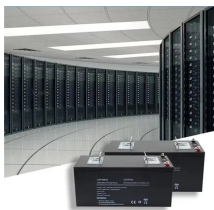
The Phicomm K2T uses MTD partition "config" to store the mac addresses in JSON format. To extract these fields correctly, a script is introduced: `/lib/functions/k2t.sh` This script provides a helper function ...



To set up port forwarding on Phicomm router, follow these steps below: 1. On Web Management, go to Main menu > Advanced > Port Forwarding and toggle on Port Forwarding switch.



The PHICOMM K2 PSG1218 is a wireless router with both 2.4 GHz and 5 GHz radios. It has five Fast Ethernet ports, later revisions featuring five Gigabit Ethernet ports, and a moderately ...



Phicomm KE 2P AC1300 Dual Band Gigabit Wireless Router is all-in-one router for home and SOHO users to share broadband internet connection over a wired or a wireless network.



It took a K2 router and left it without moving. It was indeed the high-end router in the home that was too much to use, until recently I wanted to break through.



* Product specifications, size, and shape are subject to change without notice, and actual product appearance may differ from that depicted herein.



All Chantal Lacroix Collection products are on clearance, take advantage of this opportunity to buy gifts! This item is a deferred, subscription, or recurring purchase.



For a list of all currently documented MediaTek chipsets with specifications, see MediaTek. "800002336" and "V1.4" is silkscreened on the main board.



A practical, no-fluff guide to the Phicomm K2 (PSG1218): when it's worth using, how to flash OpenWrt, what specs matter, and whether it fits your real-world needs.

Contact Us

For more information, pricing, or custom network solutions, please contact us:

Website: <https://www.hashherbcafe.co.za>

Email: hello@hashherbcafe.co.za

Phone: +27 63 814 7295

Address: 15 Galaxy Road, Linbro Business Park, Johannesburg, 2065, South Africa

This document is for informational purposes only. Specifications subject to change without notice.

