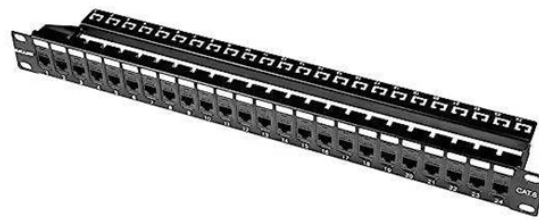


# Temporary power distribution box at a construction site in Denmark



## Temporary power distribution box at a construction site in Denmark



Adjust quickly as your site evolves with our portable power panels and distribution boxes. Designed for tough construction environments, they're easy to deploy and durable enough to withstand the rigors ...



Our site power distribution equipment is designed to withstand the tough conditions of construction sites and is used to supply temporary power to site cabins, heaters, lighting, tools and plant equipment.



Discover how to supply temporary power safely on construction sites using E-abel distribution boxes, industrial plug sockets, and IP67 connectors for reliable outdoor electricity.



For your power connections on a building site. Ask us about the possibilities for the utility connections on your building site. Read more Choose a variant 14638 - Temporary power distribution box NL 80 A ...



Blakley Electrics manufacture the widest range of Low Voltage (230V and 400V) and Reduced Low Voltage (110V) distribution equipment for temporary installations. For high risk and arduous ...



Temporary power distribution boxes for flexible electrical installation. Robust solutions for construction sites, events and temporary energy infrastructure.



Get reliable temporary power distribution and construction lighting solutions for your worksite needs with our portable power boxes, panels, and LED work lights.



Metering center for temporary electricity for, for example, construction production or events. Strong construction with folding stainless steel stand, lockable cabinet, sealable space for connection.



Trystar Portable Power Distribution delivers rugged, reliable solutions for safely managing and distributing electrical power in temporary, jobsite, event, and industrial applications.



Length:33.5mm  
Small-end inner diameter4.0mm  
Large-end inner diameter6.0mm

The panels are made in a sturdy and handy two-component technopolymer cabinet with a fire-resistant backrest, which allows them to be stored and reused in the next construction site.

## Contact Us

For more information, pricing, or custom network solutions, please contact us:

Website: <https://www.hashherbcafe.co.za>

Email: [hello@hashherbcafe.co.za](mailto:hello@hashherbcafe.co.za)

Phone: +27 63 814 7295

Address: 15 Galaxy Road, Linbro Business Park, Johannesburg, 2065, South Africa

This document is for informational purposes only. Specifications subject to change without notice.

