

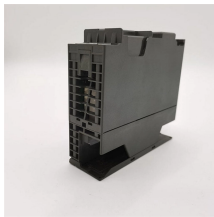
Temperature Measurement of Pipeline Cables



Temperature Measurement of Pipeline Cables



To this end, the transit time of signals sent along a cable is interpreted in terms of the temperature dependency of the cable insulation permittivity. The sensitivity is verified by laboratory ...



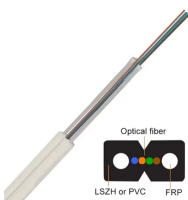
OPTHERMO™ is a distributed temperature sensing system that uses optical fibers as sensors.



This system took the cable joint as the monitoring node, applied infrared temperature measurement technology and wireless communication technology, used STM32 low-power single-chip ...



The DTSX3000 can measure up to 50 km long distances. This makes it suitable for measuring the surface temperature distribution of large facilities, such as long-distance power cables, pipelines for ...



If left undetected, these thermal problems can expedite material aging and reduce overall cable performance. Through continuous, real-time temperature monitoring of power cables operators can ...



Hence, the DTS Fiber Optic Cable can be deployed in areas where environmental and physical factors used to be a hindrance for accurate temperature measurements to be taken such as oil or gas ...



Detect thermal changes on your power cables with this surface temperature sensor. Using zip ties, the sensor is attached to the power cable and immediately starts monitoring the temperature of the ...



The aim of this paper is to present a novel phasor measurement unit (PMU) data-based cable temperature monitoring method with an intended application towards facilitating dynamic line ...



Allows the measurement of the temperature profile along the pipe and therefore of the temperature changes in the transported fluid. This information can be used for optimizing operational parameters ...



This article discusses the effect of temperature on wireline cable and how to ensure success under the most challenging operating conditions. The maximum well temperature of a cable exposed under ...

Contact Us

For more information, pricing, or custom network solutions, please contact us:

Website: <https://www.hashherbcafe.co.za>

Email: hello@hashherbcafe.co.za

Phone: +27 63 814 7295

Address: 15 Galaxy Road, Linbro Business Park, Johannesburg, 2065, South Africa

This document is for informational purposes only. Specifications subject to change without notice.

