

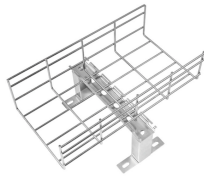
Technical briefing on protection of distribution boxes



Technical briefing on protection of distribution boxes



The Distribution licensee shall take all precautions and maintain the distribution system placed in public place in such a way as to prevent danger to the lives of human, animals and damage to the property.



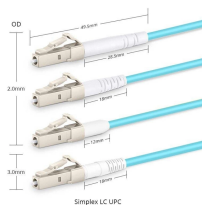
Please note that the procedures contained in this document are not intended to be comprehensive in scope, but rather cover the most common tasks involved in the construction and maintenance of ...



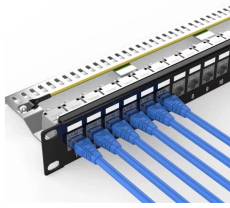
The enclosure complies with IEC 60439-3 and is suitable for accommodating various protection and control devices such as MCBs, RCDs, and other modular components.



Design requirements for low voltage distribution boxes cover NEC, IEC, and safety standards to ensure reliable, compliant electrical installations.



Henkel's polyurethane or silicone sealing foams protect the electronics in control cabinets and electrical distribution boxes against external influences, such as moisture and dust, which can cause against ...



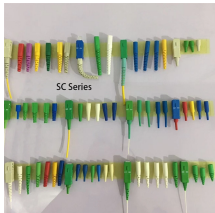
Distribution boxes protect our electrical systems like bodyguards shield VIPs. When they fail, everything goes dark. Today, we'll explore how international standards translate into practical ...



According to the principle of graded lightning protection, and based on the likelihood of a building being struck by lightning, it is necessary to deploy surge protector against lightning in stages to ensure the ...



Design requirements for low voltage distribution boxes cover NEC, IEC, and safety standards to ensure reliable, compliant electrical installations.



The handbook is targeted for power distribution applications following IEC guidelines and practices, even though many of the distribution automation principles can also be applied in power distribution ...



Figure 1 - Some modern protection devices have advanced features to reduce damage to distribution assets, minimize energy into a fault during reclose attempts, and save fuses to reduce the work of ...



These specifications provide general safety requirements along with some of the more common distribution construction configurations. They do not cover all requirements for all situations ...

Contact Us

For more information, pricing, or custom network solutions, please contact us:

Website: <https://www.hashherbcafe.co.za>

Email: hello@hashherbcafe.co.za

Phone: +27 63 814 7295

Address: 15 Galaxy Road, Linbro Business Park, Johannesburg, 2065, South Africa

This document is for informational purposes only. Specifications subject to change without notice.

