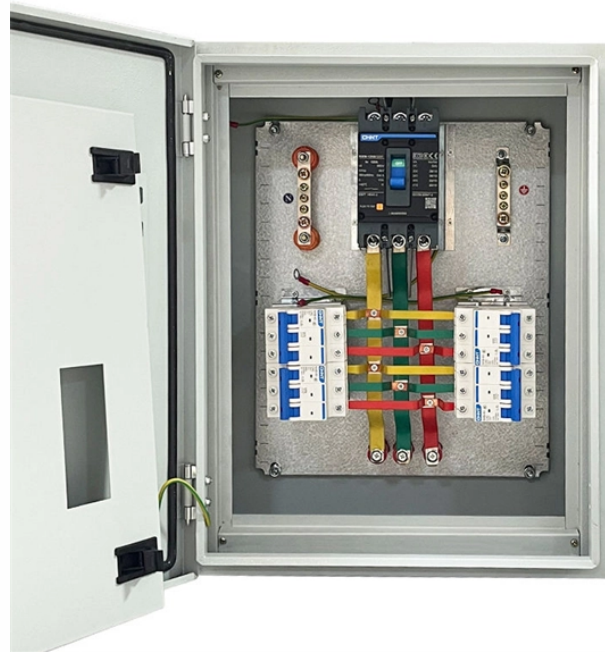


Technical Support for OTN Router PAM4



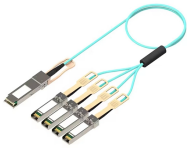
Technical Support for OTN Router PAM4



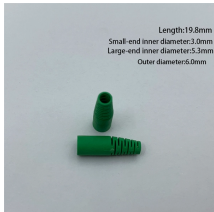
The OTN wrapper feature works with the standard transceiver types that are supported for the LAN mode of 10G, 40G and 100G on the interface modules. The SFP-10G-LR-X, QSFP-40G ...



Key Features Dual-Rate EEPROM Provisioning: Capable of being factory-coded to support standard Ethernet (212.5Gbps) or OTN framing protocols, maximizing deployment flexibility. Chromatic ...



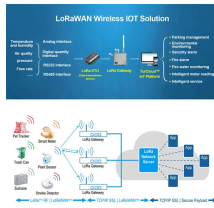
To support the statistical eye measurements such as EH and EW, graphical annotations are placed on the Accumulated Eye plot when sufficient eye population has been collected.



The latest OTN client-side series transceivers can support both Ethernet and OTN transmission. It features PAM4 higher order modulation technology to transmit 100G over a single wavelength by ...



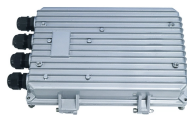
With the PAM4 encoding technology, the amount of information transmitted on 50G PAM4-based optical modules within each sampling cycle doubles. A 25G optical component can be used to achieve a 50 ...



The Short Reach 4-channel (SR4) design uses 100G-PAM4 modulation and has a maximum fiber reach of 50-meters using OM4 multimode fiber and assumes two optical patch panels ...



This presentation will provide information on a 4x112Gbps PAM4 (400GBASE-FR4) approach and investigation results to support the technical feasibility of the 2km objective based upon current ...



FlexO is an adaptation layer which provides a flexible, modular mechanism to support different line rates beyond 100G signals. FlexO enables a set of n 100 Gbit/s PHYs to be bound together to carry an ...



The reporting of full power consumption is available for all optics types. Capabilities feature native PAM4 and NRZ with CMIS and electrical pre-emphasis support. Superior cooling capabilities enable the ...



Ara supports multiple industry standard protocols up to 200Gbps per channel on the electrical host and incorporates Concatenated Forward Error Correction (FEC) to provide additional pre-FEC bit error ...



- Support a MAC data rate of 200 Gbit/s - Support a MAC data rate of 400 Gbit/s - Use of FEC is mandatory (544,514) - Preserve minimum and maximum frame size - Include Energy Efficient ...

Contact Us

For more information, pricing, or custom network solutions, please contact us:

Website: <https://www.hashherbcafe.co.za>

Email: hello@hashherbcafe.co.za

Phone: +27 63 814 7295

Address: 15 Galaxy Road, Linbro Business Park, Johannesburg, 2065, South Africa

This document is for informational purposes only. Specifications subject to change without notice.

