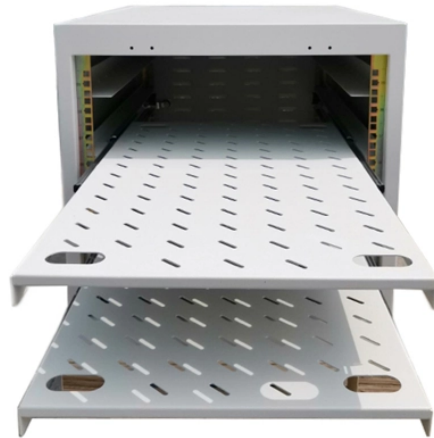
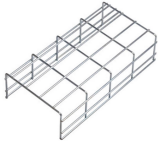


## TPA and LSA optical cable testing



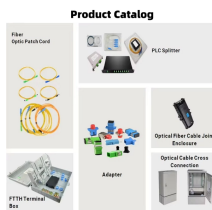
## TPA and LSA optical cable testing



These test plans shall verify compliance with specifications and proper operation including all inputs, outputs, alarms, and accessories under all modes of operation.



ABSTRACT: This implementation agreement defines a form factor optimized for external lasers delivering continuous wave (CW) light to optical transceivers co-packaged within a system. They are ...



When a fiber optic system is successfully tested and determined to meet the customer's specific requirements and relevant industry standards, the system performance and individual links ...



Whether you handle fiber on a regular basis or just occasionally, this reference guide will serve as a useful tool to ensure you never miss a critical step during your fiber testing or troubleshooting.



The continuous repeat measurement function can efficiently measure optical fiber, Specified measurement conditions are read from a file, the system set-up accordingly, and the waveform ...



In my first article, I showed how OTDRs can measure fiber attenuation, splice or connector loss and connector reflectance. I used schematic diagrams to show how these measurements are made ...



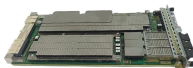
The test methods in this case are either parallel measurement using multiple test instruments, or measurement using an optical switch. Although 32 lanes can be evaluated quickly in parallel using ...



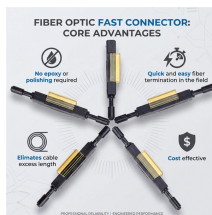
This is your "QuickStart" guide to testing fiber optic cable plants, patchcords and communications equipment with a fiber optic light source and power meter. We'll ...



The Optical Time Domain Reflectometer (OTDR) is useful for testing the integrity of fiber optic cables. It can verify splice loss, measure length and find faults.



WESTPAK's experienced test engineers and extensive capabilities have been industry leading for over 30 years. Our trifecta of uncompromised quality, customer service and project delivery make us the ...



To be able to judge whether a fiber optic cable plant is good, one does a insertion loss test with a light source and power meter and compares that to an estimate of ...



Our highly-skilled team of professionals specialize in the installation, termination, splicing, and testing of fiber optics technology in virtually every possible environment, including permitting services and ...



See the Test section of the FOA Online Guide for much more detail. After fiber optic cables are installed, spliced and terminated, they must be tested. For every fiber optic cable plant, you need to test for ...

## Contact Us

For more information, pricing, or custom network solutions, please contact us:

Website: <https://www.hashherbcafe.co.za>

Email: [hello@hashherbcafe.co.za](mailto:hello@hashherbcafe.co.za)

Phone: +27 63 814 7295

Address: 15 Galaxy Road, Linbro Business Park, Johannesburg, 2065, South Africa

This document is for informational purposes only. Specifications subject to change without notice.

