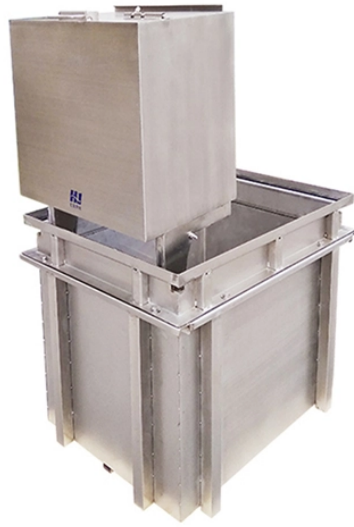


Switches are core devices in local area networks



Overview

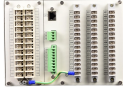
In computer networks, switches are critical devices that manage the flow of data between devices in a local area network (LAN). Acting as central connection points, switches help efficiently transmit data packets from one device to another, enabling smooth communication and. Switching in IT and computer networking is the transfer of data packets, or blocks of data, through a network switch. What is a network switch?

A network switch connects devices within a network (often a local area network, or LAN *) and forwards data packets. A core switch in networking serves as the high-capacity backbone, italic centralizing data flow and ensuring efficient communication between different network segments. Simply put, it's the kingpin that keeps your network humming. You may also want to know: Can a Nintendo Switch Play DS Games?

· The term campus LAN refers to a LAN network that spans a single geographic location, such as a building or university campus. An enterprise network is a large network that may contain several campus networks

spanning different.

Switches are core devices in local area networks



Introduction to Core Switches In the intricate world of networking, data packets traverse a complex landscape, moving between servers, client devices, and various network segments. At the ...



A network switch connects devices in a network to each other, enabling them to talk by exchanging data packets. Switches can be hardware devices that manage physical networks or ...



In a large, complex network, core switches reduce cabling requirements and the number of switch ports while still allowing all devices to send data to all other devices on the LAN.



In computer networks, switches are critical devices that manage the flow of data between devices in a local area network (LAN). Acting as central connection points, switches help efficiently ...



A switch connects devices within a LAN (local-area network) by using MAC addresses to identify where to send data packets. A router connects LANs to other area networks or to the internet.



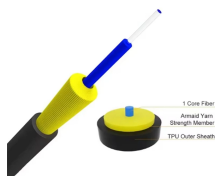
A network switch connects multiple devices within a local area network (LAN) and directs data packets only to their intended destination. In large organizations, networks become complex, ...



Learn what a LAN switch is, how LAN switches work, and what they're used for in networking. Explore types, functions, and how to choose the right model.



What is a Core Switch? A core switch is the primary switch installed at the backbone of a layered or hierarchical network. These data switches are responsible for routing and data switching at the core ...



Switches send packets directly to devices, rather than sending them to networks like a router does. What is a network switch? A network switch connects devices within a network (often a local area ...



The network switch plays an integral role in most modern Ethernet local area networks (LANs). Mid-to-large-sized LANs contain a number of linked managed switches.

Contact Us

For more information, pricing, or custom network solutions, please contact us:

Website: <https://www.hashherbcafe.co.za>

Email: hello@hashherbcafe.co.za

Phone: +27 63 814 7295

Address: 15 Galaxy Road, Linbro Business Park, Johannesburg, 2065, South Africa

This document is for informational purposes only. Specifications subject to change without notice.

