

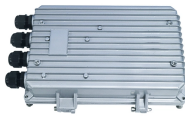
Sudden change or gradual change in single-mode fiber



Sudden change or gradual change in single-mode fiber



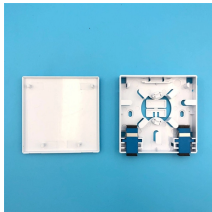
This white paper continues our series aimed at clarifying the technical nuances of deploying single-mode optical fiber in modern, large-scale data centers. These environments include enterprise, colocation, ...



A simple mechanism useful to tailor the field profile in single mode optical fibers is proposed. It involves the local and permanent bend of the fiber with bending radius of few hundred ...



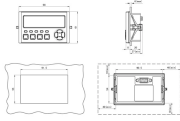
OTDR is essential for diagnosing and ensuring the integrity of single-mode fiber optic cables. Understanding OTDR traces involves analyzing backscatter, reflection events, and ...



OTDR is essential for diagnosing and ensuring the integrity of single-mode fiber optic cables. Understanding OTDR traces involves analyzing ...



By following these steps, you can systematically troubleshoot common issues with single-mode fiber patch cables and ensure optimal performance of your fiber optic network.



As a result of chromatic dispersion, a pulse transmitted through a single mode fiber broadens. The relation between the input pulse duration and the output pulse duration will be discussed in Sect. 11.5 ...



Transceivers Are More Expensive Single-mode transceivers have certainly come down in cost There was a time when you could say 7.5 x cost of multimode Large (hyper-scale) data centers driving the ...



This document describes how to troubleshoot fiber optic interfaces by addressing some of the fiber optic module and cabling specifications.



Dispersion: Single-mode fiber optic cables can experience dispersion, which can cause signal distortion and degradation. Dispersion occurs when different wavelengths of light travel at ...



Whether you are an IT specialist, a network manager, or just a curious individual interested in the technology that interconnects the world, knowing single-mode fiber is fundamental. ...



Convert fiber between multimode and single mode using smart methods for better speed, longer distance, and reliable network performance.



In this regime, the fiber is called a single-mode fiber. Higher-order modes like LP 11, LP 20 etc. then do not exist — only cladding modes, which are not localized around the fiber core.

Contact Us

For more information, pricing, or custom network solutions, please contact us:

Website: <https://www.hashherbcafe.co.za>

Email: hello@hashherbcafe.co.za

Phone: +27 63 814 7295

Address: 15 Galaxy Road, Linbro Business Park, Johannesburg, 2065, South Africa

This document is for informational purposes only. Specifications subject to change without notice.

