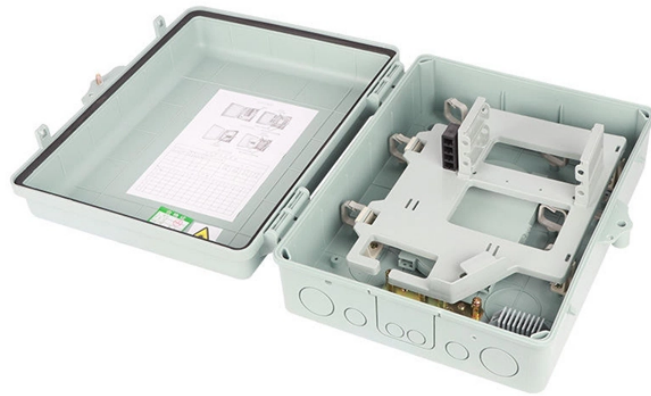


Steel Bridge Erection Demonstration



Steel Bridge Erection Demonstration



Fundamental Goal: Safely and accurately construct the bridge. Steel Design Considerations for Erection & Constructability



Three erection methods are presented using the following case studies: Conventional erection for the three-span 180m long haunched steel plate girder Mackenzie River Bridges, Northern Ontario; the ...



Clarification of Requirements for Fracture Critical Members (06/20/2012) (Rescinded) OSHA's Final Rule on Steel Erection (03/15/2002) Partial Payment of Stockpiled Material-Plates and Shapes ...



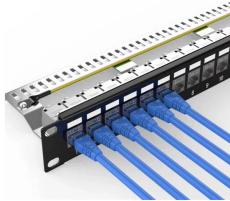
SUMMARY This Guide covers all aspects of steel bridge projects from concept to erection which bear on the quality, economy, best value, and health & safety of the erection works on site. It aims to provide ...



There are several methods for erecting steel bridges, including the bent method, launching method, traveler crane method, and cable erection methods using either diagonal or vertical hanging. Each ...



Figure 2.11 shows the erection sequence for a through-truss cantilever bridge over a navigable river. For illustrative purpose, the scheme assumes that falsework is not permitted in the ...



The Preferred Practices for Steel Bridge Design, Fabrication, and Erection document provides guidance to help steel bridge designers working on TxDOT projects to achieve optimal quality and value in ...



EN: This video captures the key stages of a steel road bridge construction. The erection process includes the following steps: Steel girder erection: performed using a mobile wheel crane.



Provisions for erection procedures and erection drawings can be found in the Second Edition of the AASHTO LRFD Bridge Construction Specifications (5). In addition, the AASHTO/NSBA Steel Bridge ...



The document discusses the erection methods for steel girder and truss bridges, detailing various techniques such as lifting, staging, floating, rolling, and launching. It also covers essential ...

Contact Us

For more information, pricing, or custom network solutions, please contact us:

Website: <https://www.hashherbcafe.co.za>

Email: hello@hashherbcafe.co.za

Phone: +27 63 814 7295

Address: 15 Galaxy Road, Linbro Business Park, Johannesburg, 2065, South Africa

This document is for informational purposes only. Specifications subject to change without notice.

