

State Grid Fiber Optic Transmission Channel



State Grid Fiber Optic Transmission Channel



Fibers essential for grid operations are spared free of cost, irrespective of whether they are required for Intra-State (InSTS) or Inter-State (ISTS) communication needs.



Multiple resources are available to visualize broadband coverage, both nationwide and in Texas. The Texas Broadband Development Office (BDO) created the Texas Broadband Development Map in ...



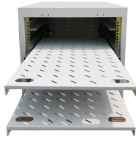
Complete DWDM channel chart with ITU-T standard frequencies and wavelengths for 100GHz and 50GHz systems. C-band channels 17-61 reference ...



The Optical Fiber Cables are being deployed along water pipeline routes which have been already mapped for the entire State. In order to accomplish objectives of T-Fiber, a layered topology for T ...



Due to the large optical bandwidth, the transmission capacity of fibers for data transmission is huge: a single silica fiber can carry millions of telephone channels ...



Each band is used as an independent channel to transmit optical signals of a specified wavelength. ITU-T divides the frequency band of single-mode optical fibers above 1260 nm into O, E, S, C, L and U ...



By promoting efficient allocation, sharing, and utilization of optical fibers, the guidelines will contribute to a more reliable, resilient, and future-ready power grid and efficient resource ...



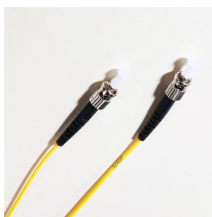
DWDM enables the transmission of multiple data channels simultaneously over a single optical fiber by using different wavelengths (or colors) of light and is agnostic to protocols and transport technologies ...



This comprehensive guide provides the essential knowledge to navigate ITU channel grids, choose the right transceiver modules, and optimize your fiber optic network.



Map Viewer - ArcGIS ... Map Viewer



For telecommunications, a frequency grid is a table of all the central frequencies (and corresponding wavelengths) of channels allowed in a communications system.



This trend drives utilities to invest in advanced fiber optic technologies that can facilitate seamless integration with smart grid infrastructure and support the demands of next-generation power ...



The map will be updated continuously to improve its accuracy through a combination of FCC verification efforts, new data from Internet providers, updates to the location data, and—importantly—information ...

Contact Us

For more information, pricing, or custom network solutions, please contact us:

Website: <https://www.hashherbcafe.co.za>

Email: hello@hashherbcafe.co.za

Phone: +27 63 814 7295

Address: 15 Galaxy Road, Linbro Business Park, Johannesburg, 2065, South Africa

This document is for informational purposes only. Specifications subject to change without notice.

