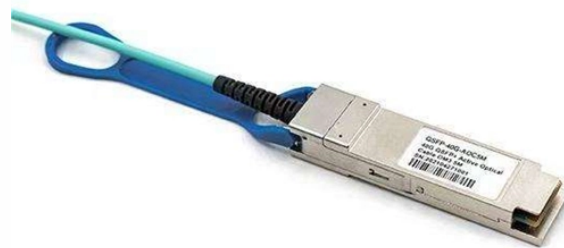


# Standard placement method for 42u network racks



## Overview

If you're installing switches, UPS units, patch panels, or edge servers in an office, colo space, or small data hall—start with this: choose a 42U floor-standing rack with front/rear doors,  $\geq 60$  cm depth, and tool-less vertical mounting rails. Skip narrow (45 cm) or shallow ( $\leq 55$  cm) models unless. A rack space calculator is a specialized tool designed to help data center professionals, IT administrators, and network engineers determine the optimal placement and space requirements for equipment in server racks. This calculator helps you plan rack layouts by calculating the total rack units. Without an effective rack cable management solution, the cables inside a server rack can quickly turn into a tangled mess, creating significant challenges for IT technicians and installers tasked with organizing and maintaining the rack. So how can you achieve efficient network rack organization?

How to Choose a 42U Server Rack Cabinet for Your Data Center or Server Room Quick Specs - 42U Server Rack Cabinet Overview A fully loaded 42U server rack cabinet has the capacity for over 3000 lbs of networking

equipment, averages 5. Front and rear sets of equipment mounting rails adjust in 1/4" increments. Adjustment is quick and convenient. The easy-view depth index ensures consistent rail placement without requiring. Note: Before using this information and the product it supports, read the general information in Appendix B, "Notices," on page 63, the Rack Safety Information and Environmental Notices and User Guide documents on the IBM Documentation CD, and the Important Notices and Warranty Information.

## Standard placement method for 42u network racks



This calculator helps you plan rack layouts by calculating the total rack units (U) needed for your equipment, including spacing for airflow and maintenance, ensuring efficient use of your data center ...



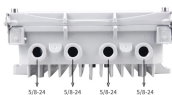
Where the two racks come together at the top front, align the screw holes of an attachment bracket (which comes with the expansion rack cabinet) with the holes in the standard rack and expansion ...



Because of the front-to-back airflow of the servers, the ideal placement of the cabinets and racks have the servers installed front to front and back to back. This configuration is referred to as a hot ...



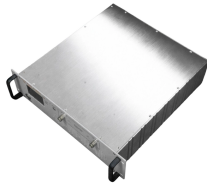
A clear, no-fluff guide on selecting the right 42U network switch rack: key specs, real-world trade-offs, installation realities, and what actually matters for IT teams and colocation users.



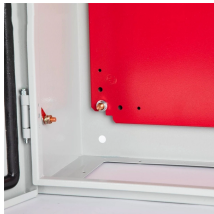
Front and rear sets of equipment mounting rails adjust in 1/4" increments. Adjustment is quick and convenient. The easy-view depth index ensures consistent rail placement without requiring time ...



Front and rear vertical rails have square mounting holes that are adjustable in ...



That fact makes procurement and datacenter managers treat 42U as de facto for planning, purchasing, and deployment. For this exact deployment profile, US manufacturer KDST Electrical offers ...



Note: The side with the two Screw Holes at the end of the Left Vertical Rail is the bottom of the Rack. Align the Screw Holes on the Top Bracket with the Screw Holes on the Left Vertical Rail.



The correct approach for network rack organization is to use patch panels for cabling distribution. For example, an FS 24-port patch panel can provide multiple centralized ports to unify ...



In this article we talk about proper placement of equipment in a rack, in other words, we take a systematic look at the operation of a server rack: from drawing up a plan and installation to...



The document describes specifications for 42U racks and PDUs. It outlines requirements for 175 DC racks, 20 network racks, and 14 telco racks of size 600mm x 1000mm.

## Contact Us

For more information, pricing, or custom network solutions, please contact us:

Website: <https://www.hashherbcafe.co.za>

Email: [hello@hashherbcafe.co.za](mailto:hello@hashherbcafe.co.za)

Phone: +27 63 814 7295

Address: 15 Galaxy Road, Linbro Business Park, Johannesburg, 2065, South Africa

This document is for informational purposes only. Specifications subject to change without notice.

