

## Standard for pigtail bending angle



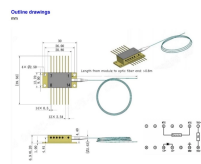
## Standard for pigtail bending angle



We provide insurance, retirement and investment products and services. Work with our team of remarkable people united by compassion and a genuine desire to help others.



Next year, city workers will be legally able to strike for the first time in five decades. Eleven months after Buster Posey's biggest blockbuster, the team returned to Dodger Stadium, where Devers put on a ...



This chart provides the available piping bend radiuses with wall thickness and the size of the bending. There are different specifications to cover different application requirements and the piping bending ...



**Bend Radius:** The specification requires that bends and elbows have a minimum radius, typically 3 times the nominal pipe size (3D) or greater, depending on the application and specific system requirements.



Not all bend tooling can safely produce bends with these minimum A or G dimensions. For safety reasons, it is acceptable for A or G dimensions and hook lengths to be longer than values shown in ...



Find a Standard Plumbing Supply store near you with the SPS store locator. Get contact information, address, map, hours of operations, available services and more.



Learn about the essentials of pipe bending, standard bend angles, industry regulations, and precision tips. Get accurate bends with our complete guide.



The meaning of STANDARD is a conspicuous object (such as a banner) formerly carried at the top of a pole and used to mark a rallying point especially in battle or to serve as an emblem.



Uncover Kenya's boldest stories: Politics, business, sports, and more. Breaking news delivered live. Be informed, empowered.



It joins Standard's award-winning portfolio of training programs, which include Standard® Pro Training On-Site and Live-Virtual training sessions, an On-Demand library, and a Masters Series.



They are manufactured in various angles, such as 45°, 90°, and 180°, and are classified as long radius (LR) or short radius (SR) based on the radius of curvature.



Below, you'll find specific guidelines for dimensions, material thickness, bending radii, and tolerances. We've also included examples to clarify these requirements.



A standard is an authoritative principle or rule that usually implies a model or pattern for guidance, by comparison with which the quantity, excellence, correctness, etc., of other things may be determined: ...



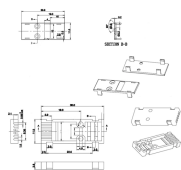
Explore ASME B16.49 standards for steel pipe bends: size, tolerance, materials, pressure ratings, testing. Ideal for engineers & professionals.



Latest London news, business, sport, culture, celebrity and entertainment from The London Standard



3.1 This standard covers bends formed by both hot and cold bending methods. For this standard, a temperature 100 degrees F below the lower critical temperature of the material is defined as being ...



10 - Pressure Determine the pressure requirements for the bend - PN Rating (e.g. PN16 - equivalent to 1600KPa, 16 Bar or approximately 160 metres of head)



Golf course supplies & accessories manufacturer including bunker rakes, golf cups, flagsticks, golf flags, marking paint & custom flags.



Explore ASME B16.49 standards for steel pipe bends: size, tolerance, materials, pressure ratings, testing. Ideal for engineers & professionals.



A standard language is a variety of language that is used by governments, in the media, in schools and for international communication. There are different standard varieties of English in the world, such ...



Elbows bend angles are 45, 90 and 180 degrees return, but bends can have any angle such as 15, 17, 30, 75 degrees etc. Bends are fabricated per the piping need; however, elbows are prefabricated and ...

## Contact Us

For more information, pricing, or custom network solutions, please contact us:

Website: <https://www.hashherbcafe.co.za>

Email: [hello@hashherbcafe.co.za](mailto:hello@hashherbcafe.co.za)

Phone: +27 63 814 7295

Address: 15 Galaxy Road, Linbro Business Park, Johannesburg, 2065, South Africa

This document is for informational purposes only. Specifications subject to change without notice.

