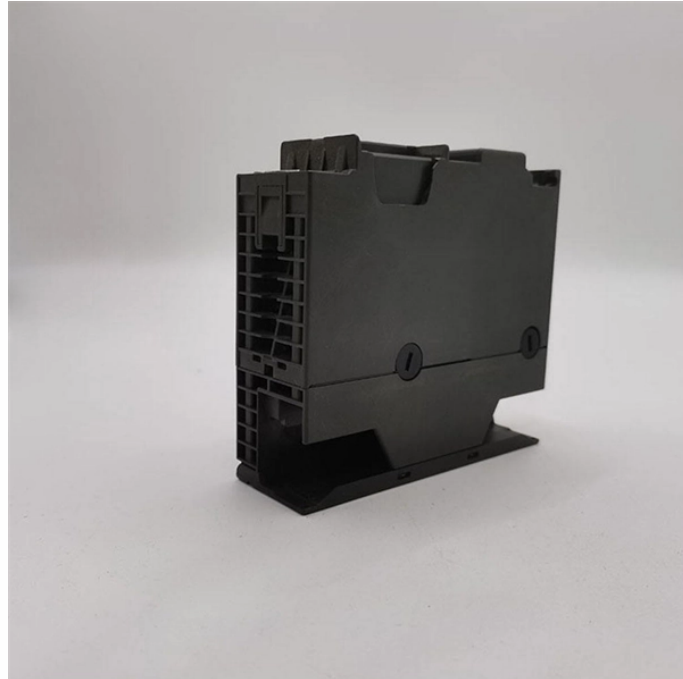


# Standard dimensions of electrical box protective openings



## Overview

Openings around boxes in noncombustible surfaces must not exceed  $\frac{1}{4}$  inch to prevent fire spread. Boxes must be securely fastened to the structure using approved methods such as: Boxes must remain rigid and protected from physical damage. Choosing the correct electrical box dimensions is essential for safe wiring, code compliance, and long-term reliability. The physical dimensions of an electrical box are often described by. An electrical box is a code-required enclosure mounted in walls, ceilings, or floors that houses wire connections, switches, receptacles, or junction splices and protects them from physical damage and fire exposure. An electrical box is a protective enclosure that serves as the termination point. NEC Article 314 establishes requirements for the installation and use of electrical boxes, conduit bodies, fittings, and handhole enclosures. Article 314 applies to: These.

## Standard dimensions of electrical box protective openings



Choosing the right electrical junction box size is crucial for safety and code compliance in your US projects. This guide helps you determine the correct dimensions based on wire fill capacity, ...



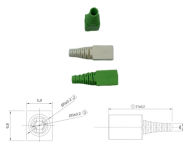
Explore NEC-based standards, box dimensions, material guidelines, and installation precision in this complete electrical junction box selection and compliance handbook.



Electrical enclosure sizes are not universal, but most manufacturers follow common size families. This guide explains typical wall-mount and floor-standing dimensions, how to read catalog ...



This guide explains standard electrical box dimensions by type, compares common sizes, and helps you select the right box for residential, commercial, and light industrial applications.



An electrical box is a protective enclosure that serves as the termination point for electrical wiring in a building. Every switch, receptacle, light fixture, and wire splice must be contained inside an approved ...



NEC Article 314 establishes requirements for the installation and use of electrical boxes, conduit bodies, fittings, and handhole enclosures.



Don't just measure the box. Learn the difference between physical size and critical internal volume for safe wiring and code-compliant NEC box fill calculations.



Choosing the right electrical junction box size is crucial for safety and code compliance in your US projects. This guide helps you determine the correct ...



This guide explains standard electrical box dimensions by type, compares common sizes, and helps you select the right box for residential, ...



Complete guide to electrical box sizes and dimensions. Includes size charts, depth comparison, volume calculation and industrial metal electrical box selection tips.



Find the right electrical enclosure size for any project. This guide covers standard sizes, selection tips, ratings, and sizing charts.

## Contact Us

For more information, pricing, or custom network solutions, please contact us:

Website: <https://www.hashherbcafe.co.za>

Email: [hello@hashherbcafe.co.za](mailto:hello@hashherbcafe.co.za)

Phone: +27 63 814 7295

Address: 15 Galaxy Road, Linbro Business Park, Johannesburg, 2065, South Africa

This document is for informational purposes only. Specifications subject to change without notice.

