

Standard configuration parameters of secondary distribution boxes



Standard configuration parameters of secondary distribution boxes



Size and number of bus bars and current rating for each bus, including mains and branches of phase, neutral, and ground buses. Short-time and short-circuit current ratings of ...



Secondary fault capability is increased by paralleled transformers and the feeder breakers must be selected accordingly. Primary switches are usually selector or duplex type so that ...



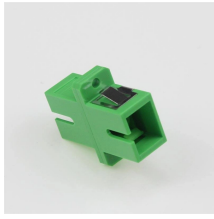
The new standard clearly regulates the responsibility for a distribution board placed on the market. It distinguishes between the original manufacturer (system manufacturer) and the manufacturer of the ...



The equipment shall be complete with cable boxes and glands suitable for XLPE or PVC insulated cables. The switchboard shall be provided with 240V single phase AC illumination and anti ...



secondary unit substation is a close-coupled assembly consisting of enclosed primary high voltage equipment, three-phase power transformers, and enclosed secondary low voltage equipment.



This technical article explains six most common bus configurations used for distribution, transmission, or switching substations at voltages up to 345 kV. Presented single line diagrams and ...



This section contains the relevant documents for designing 11kV to Low Voltage Distribution Substations



For the new college graduate from a four-year electrical engineering curriculum working in the field of commercial and industrial power systems, this guide can serve as a starting point for ...



Secondary system monitoring equipment and facilities shall be designed so that secondary system data such as plant status, control commands, indications and alarms are up to date and in a consistent ...



Third party retains ownership of the substation. SSEN designs and installs the substation. 1.2 This document covers secondary distribution substations with high voltage operating voltages of...



This document provides specifications, ordering information, illustrations, and application instructions for the various sizes of non-concrete and precast concrete enclosures used in PG& E electric ...

Contact Us

For more information, pricing, or custom network solutions, please contact us:

Website: <https://www.hashherbcafe.co.za>

Email: hello@hashherbcafe.co.za

Phone: +27 63 814 7295

Address: 15 Galaxy Road, Linbro Business Park, Johannesburg, 2065, South Africa

This document is for informational purposes only. Specifications subject to change without notice.

