

# **Standard Setting of Temporary Power Distribution Box**



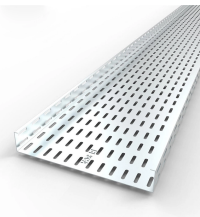
## Standard Setting of Temporary Power Distribution Box



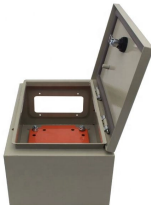
As federal and local regulations regarding jobsite safety evolve and become stricter, it's vital to understand the best way to set up and maintain compliant temporary power systems.



Securely manage job site power. Build a compliant temporary distribution box, detailing component sizing, critical grounding, and wiring integrity.



19180008 Rugged temporary power cords for use with the X-Treme Box™ to handle 50A 3-Pole/4-Wire 125/250v AC, safe appliance extension cords, cords for use in disaster recovery, restoration, ...



Stock or custom-built power distribution units have a main power input and integrate multiple variations of receptacle outputs that combine to make a single, compact “PDU” unit.



Temporary power is common during shutdowns, turnarounds, and construction work — but in hazardous (Ex) areas it introduces additional ignition risks if not designed and managed correctly. ...



work requires electrical power for many purposes. However, exposure to weather, frequent relocation, rough use and other conditions not normally encountered with conventional wiring systems ...



Temporary power distribution boxes handle that role, routing electricity where it needs to go while keeping workers and equipment out of harm's way. Getting the selection wrong means more ...



An outlet box hood (cover) installed for this purpose must be listed and identified as "extra duty." All 15- and 20-ampere, 125- and 250-volt receptacles used outdoors must be listed as weather-resistant (WR).



The requirements of Article 590 apply to temporary power and lighting installations and removals, including power for construction, remodeling, maintenance, repair, demolition, and decorative lighting.



The provisions of paragraph (a) (2) of this section apply to temporary electrical power and lighting wiring methods which may be of a class less than would be required for a permanent installation.

## Contact Us

For more information, pricing, or custom network solutions, please contact us:

Website: <https://www.hashherbcafe.co.za>

Email: [hello@hashherbcafe.co.za](mailto:hello@hashherbcafe.co.za)

Phone: +27 63 814 7295

Address: 15 Galaxy Road, Linbro Business Park, Johannesburg, 2065, South Africa

This document is for informational purposes only. Specifications subject to change without notice.

