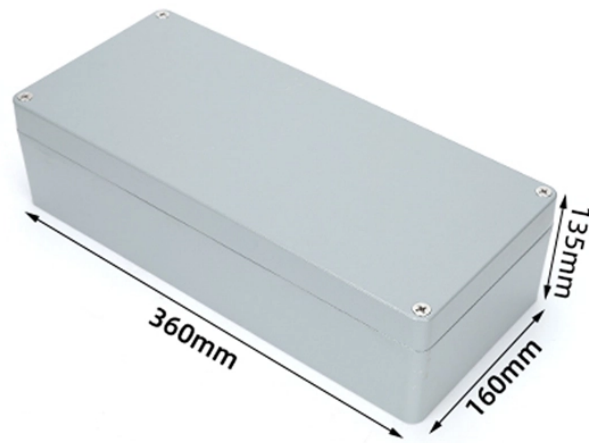


Standard Requirements for Mine Electrical Distribution Boxes



Standard Requirements for Mine Electrical Distribution Boxes



JEA is responsible for approval of materials and the design standards used in the construction of its electric infrastructure. If you have any questions regarding these manuals, please contact us.



§ 57.12006 Distribution boxes. Distribution boxes shall be provided with a disconnecting device for each branch circuit.



Owing to the unique and unpredictable working environment in the mining sector, full of dust, vibration, moisture, and temperature, you need a specially designed electrical enclosure. Such ...



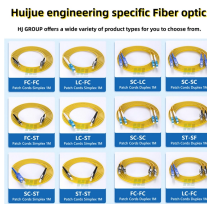
High-voltage circuits entering the underground area of any coal mine shall be protected by suitable circuit breakers of adequate interrupting capacity which are properly tested and maintained as ...



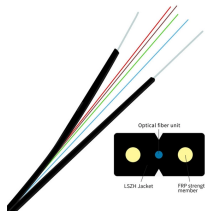
Minimum Size: Electrical manholes shall be a minimum size of 10"x10" with a standard height of 96-inches minimum ceiling height. For shallow installations and only when avoiding conflicting ...



This thesis is divided into nine chapters that describe the design and development of a proposed interface to link an electric distribution system with a process control system via the IEC ...



In this comprehensive guide, we will delve into the intricate workings of underground mine electrical distribution, exploring key components, safety measures, and the role of Becker Mining USA in ...



Distribution box means a portable apparatus with an enclosure through which an electric circuit is carried to one or more cables from a single incoming feed line; each cable circuit being connected through ...



We offer tried and true standard designs, or will customize to your requirements. IE - Engineered by Operators™. Our load centers, built with IE high-efficiency dry-type transformers, form the electrical ...



All MTE infrastructure including but not limited to conduits, manholes, box pads, and pull boxes must have a minimum horizontal separation of 36" from gas and water lines.

Contact Us

For more information, pricing, or custom network solutions, please contact us:

Website: <https://www.hashherbcafe.co.za>

Email: hello@hashherbcafe.co.za

Phone: +27 63 814 7295

Address: 15 Galaxy Road, Linbro Business Park, Johannesburg, 2065, South Africa

This document is for informational purposes only. Specifications subject to change without notice.

