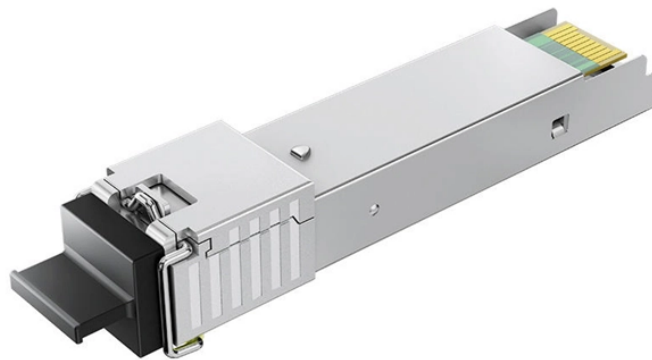


## Standard Manufacturing Requirements for Distribution Boxes in Major Factories



## Standard Manufacturing Requirements for Distribution Boxes in Ma



(1) All plant equipment and utensils used in manufacturing, processing, packing, or holding food must be so designed and of such material and workmanship as to be adequately cleanable, and must be ...



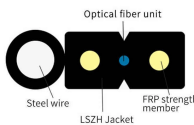
Design requirements for low voltage distribution boxes cover NEC, IEC, and safety standards to ensure reliable, compliant electrical installations.



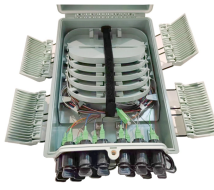
The CGMP regulations for drugs contain minimum requirements for the methods, facilities, and controls used in manufacturing, processing, and packing of a drug product.



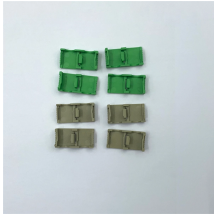
This article will detail the practical strategies for optimizing the layout of cable distribution boxes in industrial scenarios, integrating the advantages of Chuanli products and industry best ...



Learn the step-by-step distribution box manufacturing process—from design and material selection to assembly and testing. E-abel provides high-quality electrical enclosures with customization options ...



The precise process for installing electrical systems in warehouses and factories according to standards and the key points to note. Learn how to efficiently install electrical systems ...



INTERNATIONAL STANDARD ISO 18616-1  
2016-11-15 Transport packaging — Reusable, rigid plastic General distribution boxes —



Let's break down what you need to know about distribution box compliance in major global markets to protect your investments and ensure smooth project delivery.



The humble distribution box has transformed from simple metal cabinets to sophisticated safety systems. By decoding and implementing these requirements, manufacturers don't just sell products - ...



Learn the key material requirements for distribution box, Discover how the right materials ensure long-lasting performance and safety.

## Contact Us

For more information, pricing, or custom network solutions, please contact us:

Website: <https://www.hashherbcafe.co.za>

Email: [hello@hashherbcafe.co.za](mailto:hello@hashherbcafe.co.za)

Phone: +27 63 814 7295

Address: 15 Galaxy Road, Linbro Business Park, Johannesburg, 2065, South Africa

This document is for informational purposes only. Specifications subject to change without notice.

