

Standard Dimensions of Hanging Distribution Box Height



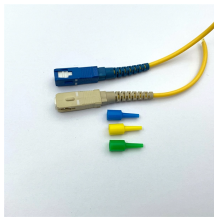
Overview

Follow height rules when installing a distribution box. Wall-mounted boxes should be 4. This height also safeguards the box from potential. ALL DIMENSIONS SHALL BE COORDINATED WITH ARCHITECTURAL DETAILS AND MAY BE ADJUSTED TO CONFORM WITH ARCHITECTURAL REQUIREMENTS AS LONG AS NO CODE RESTRICTION IS VIOLATED. OUTLETS INSTALLED LOWER THAN 15" AFF (FORWARD REACH) AND 9" AFF (SIDE REACH) ARE IN VIOLATION OF ADA. EXIT. C:VRPW-40-176 DXDX Distribution Overhead Distribution Standard-Interim CAD-Drawings Section 06 - Voltage storage or retrieval system outside of Hydro One Networks Inc. Electrical enclosure sizes are not universal, but most manufacturers follow common size families. This guide explains typical wall-mount and floor-standing dimensions, how to read catalog sizes, and how to choose the right enclosure size for your layout. PRINTED COPIES MAY NOT INCLUDE THE MOST UP-TO DATE STANDARDS, REFERENCES, OR REQUIREMENTS. TO EVERY CIRCUMSTANCE OR ELECTRICAL SYSTEM.

Standard Dimensions of Hanging Distribution Box Height



The proper installation of a distribution box involves placing it at the right height to ensure safety and convenience. Mounting it 4.5 to 5.5 feet (1.4 to 1.7 meters) high makes it easily accessible without ...



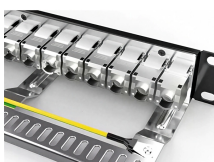
Electrical enclosure sizes are not universal, but most manufacturers follow common size families. This guide explains typical wall-mount and floor ...



This guide explains standard electrical box dimensions by type, compares common sizes, and helps you select the right box for residential, commercial, and light industrial applications.



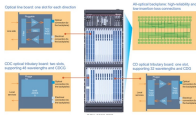
The height of the bottom of the box should not be less than 1.0m from the ground, and measures should be taken to prevent climbing. All the distribution boxes should be good protected ...



This document provides mounting height guidelines for various electrical fittings in different areas.



Choose the right box based on environment (indoor/outdoor), load capacity, and durability. Check for proper IP/NEMA ratings and material quality. Ensure safe placement: install in ...



*** - WHERE VEHICLES HEIGHTS EXCEED 4.15m, INCREASE MINIMUM VERTICAL CLEARANCE BY THE AMOUNT THE VEHICLE HEIGHT IS EXCEEDED. A - WHERE CROSSING RESIDENTIAL ...



FOR LIGHTING FIXTURES MOUNTING HEIGHTS SEE SCHEDULE AND DRAWINGS. 48" TO HIGHEST OPERABLE PART (SIDE OR FORWARD ACCESS). FIRE ALARM VISUAL ONLY ...



Electrical enclosure sizes are not universal, but most manufacturers follow common size families. This guide explains typical wall-mount and floor-standing dimensions, how to read catalog ...



General Technical Particulars for LT Distribution Boxes : - The L.T. Distribution Boxes should be of the dimensions as per the drawing & details in the table furnished.



TITLE BLOCKS ARE USED TO HOLD INFORMATION ABOUT THE BOOK, SECTION, AND STANDARD AND ARE LOCATED AT THE BOTTOM OF THE PAGE. "APPROVAL" REFERS TO ...

Contact Us

For more information, pricing, or custom network solutions, please contact us:

Website: <https://www.hashherbcafe.co.za>

Email: hello@hashherbcafe.co.za

Phone: +27 63 814 7295

Address: 15 Galaxy Road, Linbro Business Park, Johannesburg, 2065, South Africa

This document is for informational purposes only. Specifications subject to change without notice.

