

## Stainless steel cable trays are waterproof and dustproof



## Stainless steel cable trays are waterproof and dustproof



Our cable trays are made of first-class stainless steel (AISI 316 and AISI 304) that prevents corrosion and ensures a good level of resistance. Cable trays from SILTEC are available with a length of 3000 ...



Stainless steel cable trays resist corrosion, rust, chemicals, UV, water, high temperature and any other severe conditions. Easy cutting and drilling with standard tools.



Achieve a clean, professional cable management system with the Kable Kontrol® Stainless Steel Cable Tray Straight Sections. Constructed from high-quality 304 stainless steel, these trays provide ...



Choose from our selection of cable trays, including over 850 products in a wide range of styles and sizes. Same and Next Day Delivery.



Cable tray is considered to be a system. It must provide continuous support for cables, and the electrical continuity of the cable tray system must be maintained.



These are made from the finest stainless steel metal that adds to the robustness and longevity of cable trays. These are preferred for cables that require better load-bearing capacity and protection against ...



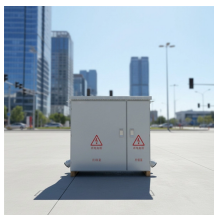
Superfab Inc's Stainless Steel Cable Trays offer a durable, cost-effective, and aesthetic solution for cable management. With superior strength, corrosion resistance, and versatility, these trays are ...



Achieve a clean, professional cable management system with the Kable Kontrol® Stainless Steel Cable Tray Straight Sections. Constructed from high-quality 304 stainless steel with a chrome finish, these ...



I often hear concerns about cable trays failing in damp basements or dusty factories. It's a real issue. This guide will explain how we test cable trays to make sure they protect your vital ...



Achieve a clean, professional cable management system with the Kable Kontrol® ...



Among the various solutions available, stainless steel cable trays have emerged as a premier choice stainless steel cable tray for engineers and facility managers seeking durability, ...

## Contact Us

For more information, pricing, or custom network solutions, please contact us:

Website: <https://www.hashherbcafe.co.za>

Email: [hello@hashherbcafe.co.za](mailto:hello@hashherbcafe.co.za)

Phone: +27 63 814 7295

Address: 15 Galaxy Road, Linbro Business Park, Johannesburg, 2065, South Africa

This document is for informational purposes only. Specifications subject to change without notice.

