

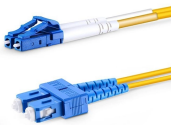
Stainless Steel Vertical Shaft Cable Tray



Stainless Steel Vertical Shaft Cable Tray



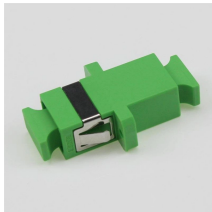
Guangdong Tianlai Steel Pipe Cable Tray Co., Ltd. has customized and developed a cable tray solution suitable for the main venue scene of the 2008 Beijing Olympics in response to the demands of ...



Vertical fittings allow for a change in direction to a different plane. Covers are used when additional security is required. Splices join any combination of straight sections and fittings. Supports provide ...



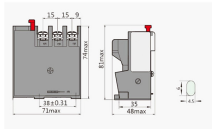
Find your stainless steel cable tray easily amongst the 24 products from the leading brands (By CARPEL, OBO Bettermann, INTERFLEX, ...) on DirectIndustry, the industry specialist for your ...



Choose from our selection of cable trays, including over 850 products in a wide range of styles and sizes. Same and Next Day Delivery.



Supplier of wire mesh cable trays and wire basket trays in stainless steel for production facilities and the whole industry.



Superfab Inc's Stainless Steel Cable Trays offer a durable, cost-effective, and aesthetic solution for cable management. With superior strength, corrosion resistance, and versatility, these trays are ...



Our cable tray design considerations guide details key factors to consider when designing cable tray systems for industrial and commercial applications. Browse or download the cable tray catalog for ...



Cable tray length is selected based on the load to be supported, the distance between the supports (also referred to as the span), and handling and installation constraints.



The vertical shaft cable tray adopts lightweight design, significantly reducing construction costs, minimizing vertical shaft loads, and possessing excellent thermal conductivity, which can effectively ...



Stainless Steel Construction: Durable and resistant to corrosion for long-lasting use. **Ventilated Design:** Enhances air circulation, preventing overheating and rusting. **Customizable Dimensions:** Tailored to ...

Contact Us

For more information, pricing, or custom network solutions, please contact us:

Website: <https://www.hashherbcafe.co.za>

Email: hello@hashherbcafe.co.za

Phone: +27 63 814 7295

Address: 15 Galaxy Road, Linbro Business Park, Johannesburg, 2065, South Africa

This document is for informational purposes only. Specifications subject to change without notice.

