

Spectrometer used every day



Spectrometer used every day



A spectrometer is an indispensable scientific instrument in chemistry, biology, and materials research. It helps scientists identify sample composition, explore material characteristics, ...



Widely used across scientific disciplines, it is instrumental for tasks like analyzing concentrations, assessing purity, and determining chemical compositions in diverse applications.



Mass spectrometers are widely used in laboratories for educational purposes and in the field to study the emission of molecules. They are also used to help trace metals and biological materials, including ...



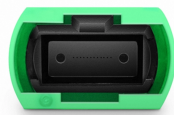
Avoid spending money on functionalities you won't use, yet invest adequately in accuracy and adaptability. At the end of the day, choosing the right spectrometer is all about knowing what you ...



It is mostly used for the measurement of the quantities of contaminants in the soil, water, and air. For instance, using a spectrophotometer helps in testing whether harmful substances such ...



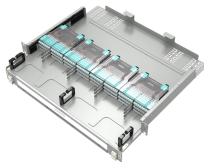
A mass spectrometer (MS) measures the mass-to-charge ratio of ions and is widely used in chemistry, biology, medicine, and advanced research. An optical emission spectrometer (OES) ...



By exploring the use cases and methodologies described throughout this article, readers will gain insights into the practical implications of spectrophotometric analysis.



Spectrometers are used in astronomy to analyze the chemical composition of stars and planets, and spectrometers gather data on the origin of the universe. Examples of spectrometers are devices that ...



Spectrometers are used in numerous industrial and commercial sectors, where precise lighting parameters are vital for meeting product specifications or health and safety regulations. This article ...



A high-speed spectrometer can be used in contamination monitoring to indicate the presence and identification of contaminants in groundwater, air, soil, or products.

Contact Us

For more information, pricing, or custom network solutions, please contact us:

Website: <https://www.hashherbcafe.co.za>

Email: hello@hashherbcafe.co.za

Phone: +27 63 814 7295

Address: 15 Galaxy Road, Linbro Business Park, Johannesburg, 2065, South Africa

This document is for informational purposes only. Specifications subject to change without notice.

