

# **Specializing in Austrian Trough-Type Cable Tray Support Arms**



## Specializing in Austrian Trough-Type Cable Tray Support Arms



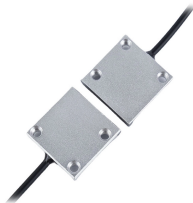
Our cable tray design considerations guide details key factors to consider when designing cable tray systems for industrial and commercial applications. Browse or download the cable tray catalog for ...



Please click the appropriate link below to view the catalog section as a PDF.



Four different mesh cable tray types are available, depending on the requirements, area of application and cable quantity. The innovative Magic connection system of the GRM and G-GRM mesh cable ...



High stability concrete or composite cable trough systems for secure protection of cables and utilities within internal or external surfaces.



Ladder type cable support system constructed from two side rails connected with individual rungs. Adhwa provides solid side rail protection and support strength with smooth radius fittings and a wide ...



The Cable Tray Institute (CTI) was founded in 1991 to support the cable tray industry by engaging in research, development, education, and the dissemination of information designed to promote, ...



So, whether specifying a major new project, or simply refurbishing existing facilities, choose ABB cable tray to deliver the most effective, reliable and long lasting support for your cabling needs.



Cooper B-Line offers commercial and industrial wireway and wiring trough to handle almost any of your wire and cable routing needs. Commercial Type 1 and 3R designs are available with or without ...



Cable Support Systems are well designed to provide necessary support for cable trays, cable ladders and trunkings. Cable supports are manufactured according to common standards from high quality ...



Wescosa designs and manufactures cable tray systems, including perforated tray, cable ladder, channel tray and strut (metal framing), directly from production facilities in Dammam Saudi Arabia.

## Contact Us

For more information, pricing, or custom network solutions, please contact us:

Website: <https://www.hashherbcafe.co.za>

Email: [hello@hashherbcafe.co.za](mailto:hello@hashherbcafe.co.za)

Phone: +27 63 814 7295

Address: 15 Galaxy Road, Linbro Business Park, Johannesburg, 2065, South Africa

This document is for informational purposes only. Specifications subject to change without notice.

