

## Spacing between power cable tray and low voltage cable tray



## Spacing between power cable tray and low voltage cable tray



Cable tray length is selected based on the load to be supported, the distance between the supports (also referred to as the span), and handling and installation constraints.



Power cables rated 600V or less and Class 2 or Class 3 signal cables may share a tray if separated by a fixed barrier or if the power cables are separated from the signal cables by a distance ...



Support spacing for cable trays must align with the manufacturer's instructions, as outlined in NEC 392.30 (A). Generally, standard trays require supports every 6 to 10 feet, while ...



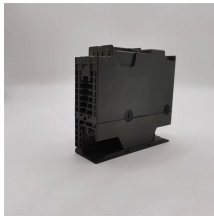
According to NEC Article 392.10 (B) (1) (c), the maximum allowable rung spacing for cable trays supporting these sizes of single conductor cables is 9 inches (229 mm).



Spacing Standards: Electrical (power) and instrumentation (signal/control) cable trays should maintain a minimum vertical and horizontal distance. Industry standards often recommend at least 300mm (12 ...



Best practices include maintaining physical spacing between power and data cables, using dividers when required, avoiding long parallel runs, and following established voltage ...



Best Practice: Unshielded data cable vs. power cable requires 12 inches of separation unless a listed barrier or separate raceway is used. Shielded data cable vs. power cable requires 6 ...



Mixed Voltages: It is impossible to place high-powered wires (such as those of a large motor) and low-powered wires (such as those of the internet) in the same tray without a solid wall ...



Maintaining the required separation distance in concealed spaces, such as within walls, ceilings, and cable trays, requires specialized installation methods. One straightforward approach involves using ...



For example, in a facility where the maximum available voltage is 480 volts, it would be pointless to require separation in the cable tray between two sets of 480-volt conductors just because one set ...

## Contact Us

For more information, pricing, or custom network solutions, please contact us:

Website: <https://www.hashherbcafe.co.za>

Email: [hello@hashherbcafe.co.za](mailto:hello@hashherbcafe.co.za)

Phone: +27 63 814 7295

Address: 15 Galaxy Road, Linbro Business Park, Johannesburg, 2065, South Africa

This document is for informational purposes only. Specifications subject to change without notice.

