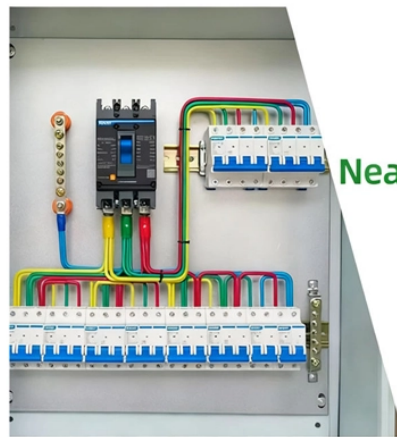


## South Korean Stainless Steel Distribution Box Manufacturer

### DETAILS DISPLAY



Focus On Every Detail



01

Neat & Clean  
Layout



Cleaner arrangement  
of components,  
Easy to operate

### Overview

HWASIN Industrial Systems manufactures and provides enclosures for a wide range of industries ranging from electric, chemicals, electronics, mechanical engineering to infrastructure. founded in 2001 is the best professional Company in Korea dedicated to stainless steel treatment and distribution as well as aluminum and brass. As a leader in this field here, we imported high effective. We have been the best trader and manufacturer of Stainless Steel products in Korea since 1982. 0 Billion by 2033, growing at a CAGR of 4.



## South Korean Stainless Steel Distribution Box Manufacturer



Yieh Corp is a top international iron & steel company specializing in stainless steel, coated steel, and aluminum, catering to various ...



DSP's cutting-edge technologies have opened a new world of human-centered "eco-friendly stainless steel." DSP is committed to the constant development of new stainless products that never fail to ...



HWASIN Industrial Systems manufactures and provides enclosures for a wide range of industries ranging from electric, chemicals, electronics, mechanical engineering to infrastructure. We have ...



Contributing to the development of material and component industry with the first technologies in Korea The company constructed the first production facility in Korea which made holes by heating round ...



Jingjin Equipment Inc. is a professional supplier of distribution cabinets, providing integrated solutions for power distribution, system design, manufacturing, and project support.



Yieh Corp is a top international iron & steel company specializing in stainless steel, coated steel, and aluminum, catering to various industries around the globe.



20 Long Years of Supplying & Manufacturing Excellence with Quality At Its Best! STEELLOUS is a compound word of Steel and -lous, symbolizing our commitment to supplying safe steel products that ...



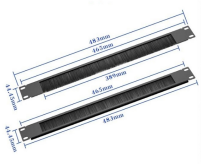
Launched import replacement stainless steel plate in five offices nationwide (Siheung, Busan, Cheonan, Daegu, Gwangju) Shipment ceremony for the first overseas sale



Our Ulsan Plant has been equipped with the biggest Surface-polishing line in Korea with the annual capacity of 50,000 M/T. We are very proud of our long experience, profound knowledge and the ...



This article explores the importance, emerging trends, innovations, investment opportunities, and challenges within this crucial market segment in South Korea.



SM Steel is the largest stainless steel processing center in Korea with an annual capacity of 200,000 tons, and supply our products through our national distribution network.

## Contact Us

For more information, pricing, or custom network solutions, please contact us:

Website: <https://www.hashherbcafe.co.za>

Email: [hello@hashherbcafe.co.za](mailto:hello@hashherbcafe.co.za)

Phone: +27 63 814 7295

Address: 15 Galaxy Road, Linbro Business Park, Johannesburg, 2065, South Africa

This document is for informational purposes only. Specifications subject to change without notice.

