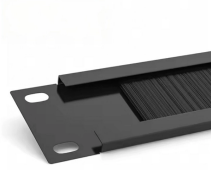


Single-optical module interface



Single-optical module interface



Fiber optic connectors represent the interface linking the optical modules to a fiber optic patch cable, available in single-mode or multi-mode configurations. Digital Diagnostic Monitoring (DDM)



Single Mode SFP Fiber Module is a cost effective way to connect a single network device to a wide variety of fiber cable distances and types. The primary goal of the transmitter enables the bandwidth ...



What is an Optical Transceiver Module? An optical transceiver module, often simply called an optical module, acts as a signal conversion interface in fiber optic networks. It transforms ...



Altronix P1AB2K kit includes 1 P1A2K and 1 P1B2K hot-pluggable Bi-Directional single strand SFP fiber transceiver modules and is readily usable with all Altronix NetWay Spectrum fiber optic equipment for ...



Explore common SFP fiber optic connector types, including LC, SC, and MPO/MTP. Learn their differences, use cases, and compatibility.



This guide demystifies SFP modules, exploring their design, types, key differences from related modules (like SFP+, SFP28, and QSFP), and actionable tips for selecting the right one for ...



SFP transceivers are valued for their flexibility, low power consumption and ability to support both single-mode and multimode fiber, making them ideal for short-range and long-haul optical transport.



Single fiber QSFP28 modules (commonly called BiDi transceivers) enable full-duplex 100G communication over a single optical strand. They do this by using Wavelength Division ...



What is an SFP? SFP (Small Form-factor Pluggable) is a compact, hot-pluggable network interface module used to connect network devices (switches, routers, firewalls) to fiber optic or copper cables. ...



In BiDi optical modules, SC (Subscriber Connector) and LC (Lucent Connector) are common fiber interface types. While they share the same functionality, they differ significantly in their ...

Contact Us

For more information, pricing, or custom network solutions, please contact us:

Website: <https://www.hashherbcafe.co.za>

Email: hello@hashherbcafe.co.za

Phone: +27 63 814 7295

Address: 15 Galaxy Road, Linbro Business Park, Johannesburg, 2065, South Africa

This document is for informational purposes only. Specifications subject to change without notice.

