

## Single-fiber transceiver plugged into dual-fiber optical module



## Single-fiber transceiver plugged into dual-fiber optical module



Know the key differences between Single and dual-fiber optical transceivers for efficient network deployment and optimization.



When planning a fiber optic network, one key decision is choosing between single-fiber (BiDi) and dual-fiber optical transceivers. This guide from ETU-Link explains their differences, advantages, and how to ...



Among these devices, single-fiber modules (BiDi) and dual-fiber modules (standard duplex) are two primary categories. Understanding their differences is essential for network ...



BiDi modules are transceivers that can send and receive at the same time over one fiber cable using two wavelengths. This full-duplex allows both directions without requiring a separate fiber ...



Choosing between a 100G single-fiber (BiDi) and a dual-fiber optical module is a critical decision in network design, directly impacting cost, fiber resource utilization, and application ...



The single-fiber optical module is an optical module product with only one optical fiber port. It can transmit and receive optical signals at the same time by inserting only one optical fiber. ...



Dual Fiber: Employs two separate optical fibers, one dedicated to transmitting and the other for receiving data. Offers a simpler design and potentially higher signal strength.



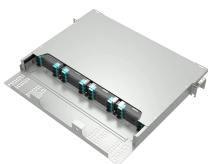
Short answer: Usually yes, you use them in pairs, but the “pair” can be a media converter on one end and a fiber switch (or SFP in a switch) on the other, as long as both sides speak the ...



This is the legal and technical foundation that allows you to plug a third-party module into a Cisco, Juniper, or Huawei switch and have it fit physically perfectly.



Short answer: Usually yes, you use them in pairs, but the “pair” can be a media converter on one end and a fiber switch (or SFP in a switch) on the ...



This comprehensive guide explores the differences between single and dual fiber SFPs, their respective benefits, limitations, and use cases—helping you make an informed choice that aligns with your ...

## Contact Us

For more information, pricing, or custom network solutions, please contact us:

Website: <https://www.hashherbcafe.co.za>

Email: [hello@hashherbcafe.co.za](mailto:hello@hashherbcafe.co.za)

Phone: +27 63 814 7295

Address: 15 Galaxy Road, Linbro Business Park, Johannesburg, 2065, South Africa

This document is for informational purposes only. Specifications subject to change without notice.

