

# **Singapore Low-Power Optical Module 1G**



## Singapore Low-Power Optical Module 1G



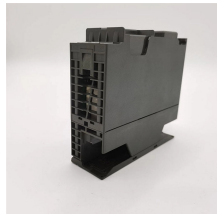
The Kramer SFP1-SMb-S is a certified hot-pluggable 1G SFP transceiver designed for reliable optical data transmission over two strands of single-mode fiber. Operating with a 1550 nm transmitter and ...



FS gigabit ethernet transceiver solutions provide fibre or copper options including 1000BASE-SX, 1000BASE-LX/LH, 1000BASE-T etc., from 100m to 160km, for 1G switches, routers, servers, NICs ...



Offering speeds of 1.25GB up to 2.5GB and a transmission range of 20km at 1310nm, this efficient module integrates seamlessly with existing SFP LC interfaces and operates on a low-voltage 3.3V ...



ZTSP-MM850001 adopts a standard SFP form factor with an LC duplex connector, supporting hot-pluggable installation for easy deployment and maintenance. With low power consumption (<1W) ...



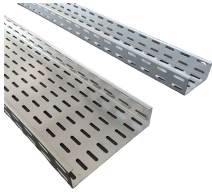
They are designed for use in Fast Ethernet, Gigabit Ethernet, Fibre Channel, and SONET/SDH links, compliant with the SFP MSA. GEZHI supplies OEM service and Third-Party compatible fiber optic ...



This SFP transceiver delivers exceptional reliability, low power consumption, and seamless integration, making it the perfect solution for businesses looking to enhance fiber optic network performance.



Certified Transceivers — Kramer certified, hot-pluggable SFP optical modules, for high-quality transmission of 1.25Gbps signal over single-mode optical fiber ...



Certified Transceivers — Kramer certified, hot-pluggable SFP optical modules, for high-quality transmission of 1.25Gbps signal over single-mode optical fiber cables, connecting 2 single-mode ...



SFP transceiver that supports 1G connections up to 3 km using single-mode fiber with a simplex LC UPC connector.



This 1G SFP SX transceiver module fully complies with the SFP Multi-Sourcing Agreement (MSA) and can be used on MSA compliant SFP ports of optical networking equipment. The transmitter section ...



Integrate the SOLTECH SFP-SX Optical Transceiver Module into your network for enhanced connectivity over multi-mode fiber. This module is capable of 1.25GB speeds, upgradeable to 2.5GB, ...

## Contact Us

For more information, pricing, or custom network solutions, please contact us:

Website: <https://www.hashherbcafe.co.za>

Email: [hello@hashherbcafe.co.za](mailto:hello@hashherbcafe.co.za)

Phone: +27 63 814 7295

Address: 15 Galaxy Road, Linbro Business Park, Johannesburg, 2065, South Africa

This document is for informational purposes only. Specifications subject to change without notice.

