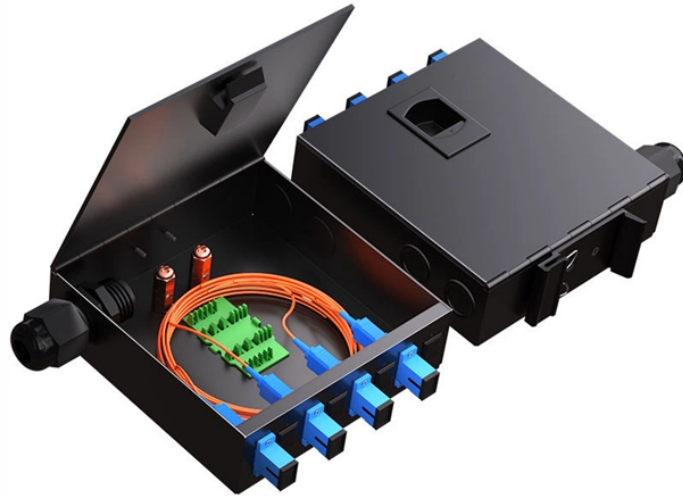


# **Silicon Photonics Module LPO**



## Silicon Photonics Module LPO



CPO (Co-Packaged Optics) and LPO (Linear Drive Pluggable Optics) represent two revolutionary approaches to addressing the critical challenges of power efficiency, bandwidth density, ...



SANTA CLARA, Calif., March 31, 2025 — Marvell Technology, Inc. (NASDAQ: MRVL), a leader in data infrastructure semiconductor solutions, will demonstrate at OFC 2025 its 1.6T silicon photonics light ...



Built with silicon-photonics optical engines and linear transmitters and receivers, Infraeo's 1.6T 2xDR4/DR8 LPO module with Silicon Photonics serves scale-up and scale-out networks.



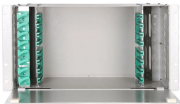
Q3: Is silicon photonics a replacement for CPO or LPO? No. Silicon photonics is a foundational integration technology that supports both CPO and LPO, as well as traditional pluggable...



Our research covers the whole supply chain from optical and semiconductor components, to modules, sub-systems and their applications in telecom and datacom systems.



Silicon Photonics: Low Reflections vs. Discrete • Silicon photonics 8x100G MZM with Tight Integration of Driver EIC Reflectance seen from Host Serdes



Silicon photonics reduces power consumption in both LRO and LPO modules by integrating optical components directly on silicon chips. Traditional optical modules require separate components for ...



Hyper Photonix''s LPO modules featured high-speed, low-power performance based on mature Silicon Photonics technology, enabling deployment in scalable network architectures.



Marvell Technology (NASDAQ: MRVL) has unveiled its new 1.6T silicon photonics light engine integrated into a linear-drive pluggable optics (LPO) module at OFC 2025.



The Centera 1.6Tbps DR8 LPO OSFP transceiver incorporates the NewPhotonics laser-enabled PIC in an ultra-low-power architecture optimized for the increasing interoperability and ...

## Contact Us

For more information, pricing, or custom network solutions, please contact us:

Website: <https://www.hashherbcafe.co.za>

Email: [hello@hashherbcafe.co.za](mailto:hello@hashherbcafe.co.za)

Phone: +27 63 814 7295

Address: 15 Galaxy Road, Linbro Business Park, Johannesburg, 2065, South Africa

This document is for informational purposes only. Specifications subject to change without notice.

