

Side entry from household distribution box



Side entry from household distribution box



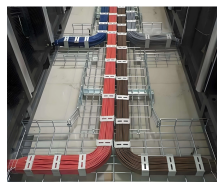
Every panel I've found has the hub entrance on the left side. Even panels with the meter on the right side still have the entrance on the left side.



Look for the point at which the main service wires from the utility company enter the home. If electrical service is delivered by overhead wires, they may enter a metal service pipe that ...



It provides a visual representation of the electrical distribution system in a residential building, helping to identify the various components and understand how they are connected.



It provides an overview of the components that make up your home's electrical system, and how they are wired together. This type of diagram is a handy tool for anyone working on or ...



The box located on the side of a house, often made of metal or heavy plastic, is the primary electrical service entrance equipment. This assembly is the gateway where the utility's power grid connects to ...



The diagram of the distribution board's wiring shows exactly how each circuit is wired and connected. It also includes any additional components, such as smoke detectors or surge ...



Power enters the drop through the Service Entrance. The service entrance includes the Electric Meter that measures the amount of energy delivered to the home and the Service Panel that houses the ...



In this section of the JLC Field Guide, we address what is often called the load center or just the electrical panel, including the service entrance that feeds into, and any subpanels that might ...



Here we look at the load centers—the distribution center or main panel and smaller subpanels used to hook up and control the various electrical circuits. Main panels come in scores of ...



They are directly connected to the utility's distribution grid and are energized at all times. That creates a major safety issue, and it's why it's crucial to leave repairs of the conductors ...

Your Home Electrical ServiceMain Electrical PanelCircuit Breakers and FusesSubpanels and Branch CircuitsOutdoor CircuitsYour home's electrical system begins with your electric utility company, which sends electrical power to your home through electrical lines overhead from a power pole or underground through buried pipes called "conduit." At the point where the power enters your house, you'll usually find an electric meter and main service panel, as shown in th...See more on hometips

Missing: Side entryMust include: Side entry.rcimgcol .cico { background: #f5f5f5; } .b_drk.rcimgcol .cico, .b_dark.rcimgcol .cico { background: unset; }.b_imgSet .b_hList li.square_m,.b_imgSet .b_hList li.tall_m{width:75px}.b_imgSet .b_hList li.tall_mlb{width:113px}.b_imgSet .b_hList li.tall_mln{width:96px}.b_imgSet .b_hList li.wide_m{width:128px}.b_imgSet.b_Card .b_hList li{padding-left:1px;padding-right:9px}.b_imgSet.b_Card .b_hList li.tall_wfn{width:80px;padding-right:6px}.b_imgSet.b_Card .b_hList li:last-child{padding-right:1px}.b_imgSet.b_Card .b_imgSetData{padding:0 8px 8px;height:40px}.b_imgSet.b_Card .b_imgSetItem{box-shadow:0 0 0 1px rgba(0,0,0,.05),0 2px 3px 0 rgba(0,0,0,.1);border-radius:6px;overflow:hidden}.b_imgSet .b_imgSetData p a{color:#444;outline-offset:0}.b_subModule .b_clearfix.b_mhdr .b_floatR .b_moreLink,.b_subModule .b_clearfix.b_mhdr .b_floatR .b_moreLink:visited,.b_subModule>.b_moreLink,.b_subModule>.b_moreLink:visited{color:#767676}.b_imgSet .cico.b_placeholder{display:flex;justify-content:center;background-color:#f5f5f5;background-clip:content-box}.b_imgSet .cico.b_placeholder a{display:flex}.b_imgSet .cico.b_placeholder a img{width:48px;height:48px;margin:auto}@media(max-width:1362.9px){#b_context .b_entityTP .b_imgSet li:nth-child(5){display:none}.b_imgSet .b_hList li.wide_m:nth-child(3){display:none}}@media(max-width:1274.9px){#b_context .b_entityTP .b_imgSet li:nth-child(4){display:none}.b_imgSet .b_hList li.wide_m:nth-child(2){display:none}}.rcimgcol .b_imgSet{content-visibility:auto;contain-intrinsic-size:1px 124px}.rcimgcol{height:108px;padding-top:var(--smtc-gap-between-content-x-small);padding-bottom:var(--smtc-gap-between-content-x-small)}.b_algo:has(.b_agh) .rcimgcol{padding-top:var(--smtc-gap-between-content-xx-small)}.rcimgcol .b_imgSet{overflow:hidden}.rcimgcol .b_imgSet ul{overflow-x:auto;overflow-y:hidden;white-space:nowrap;padding-left:0}.rcimgcol .b_imgSet ul::-webkit-scrollbar{-webkit-appearance:none}.rcimgcol .b_imgSet .b_hList>li{padding-right:var(--smtc-padding-ctrl-text-side)}.rcimgcol .b_imgSet .cico{border-radius:unset}.rcimgcol .b_imgSet .b_hList>li:first-child .cico,.rcimgcol .b_imgSet .b_hList>li:first-child .cico a{border-radius:unset;border-top-left-radius:var(--mai-smtc-corner-card-default);border-bottom-left-radius:var(--mai-smtc-corner-card-default);overflow:hidden}.rcimgcol .b_imgSet .b_hList>li:last-child .cico,.rcimgcol .b_imgSet .b_hList>li:last-child .cico a{border-radius:unset;border-top-right-radius:var(--mai-smtc-corner-card-default);border-bottom-right-radius:var(--mai-smtc-corner-card-default);overflow:hidden}.rcimgcol .rcimgcol .b_sideBleed{margin-left:unset;margin-right:unset}.rcimgcol .b_imgclgovr{cursor:pointer}.rcimgcol .b_imgclgovr .cico img:hover{transform:scale(1.05);transition:transform .5s ease}#b_content #b_results>.b_algo .b_caption:has(.rcimgcol){padding-right:var(--mai-smtc-padding-card-default);margin-right:calc(-1*var(--mai-smtc-padding-card-default));margin-left:calc(-1*var(--mai-smtc-padding-card-default));padding-left:var(--mai-smtc-padding-card-default)}.rcimgcol .b_imgSet .b_hList .cico a{display:flex;outline-offset:-2px} sightsOverlay,#OverlayIFrame.b_mcOverlay sightsOverlay{position:fixed

```
;top:5%;left:5%;bottom:5%;right:5%;width:90%;height:90%;border:0;border-radius:15px;margin:0;padding:0;overflow:hidden;z-index:9;display:none}#OverlayMask,#OverlayMask.b_mcOverlay{z-index:8;background-color:#000;opacity:.6;position:fixed;top:0;left:0;width:100%;height:100%}.rcimgcol .b_hList>li{position:relative;padding-bottom:0}.rcimgcol .b_hList>li .iacf_smol{pointer-events:none;border-top-right-radius:var(--mai-smtc-corner-card-default);border-bottom-right-radius:var(--mai-smtc-corner-card-default);white-space:normal}.rcimgcol .b_hList .cico{margin-bottom:0}.iacf_smol{display:flex;justify-content:center;align-items:center;gap:var(--smtc-gap-between-content-xx-small);width:100%;height:100%;background:rgba(0,0,0,.6);position:absolute;left:0;top:0;color:var(--mai-smtc-foreground-ctrl-on-image-rest);font:var(--bing-smtc-text-global-body2-strong);flex-wrap:wrap;align-content:center;text-align:center}.iacf_smol:hover{text-decoration:underline}.iacfmit[data-nohov] .iacfimgc .cico img{transform:none}p>.news_dt{color:#767676}Electrical Academia
```

Contact Us

For more information, pricing, or custom network solutions, please contact us:

Website: <https://www.hashherbcafe.co.za>

Email: hello@hashherbcafe.co.za

Phone: +27 63 814 7295

Address: 15 Galaxy Road, Linbro Business Park, Johannesburg, 2065, South Africa

This document is for informational purposes only. Specifications subject to change without notice.

