

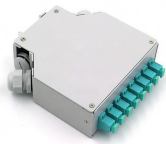
# **Shortening Plan for Communication Towers**



## Shortening Plan for Communication Towers



This program should address all of the hazards associated with communication tower work, and all companies should ensure that their safety and health programs are compatible with the safety ...



NOTE: These recommendations replace all previous recommendations for communication tower construction and operation. These recommendations have been modified and updated from previous ...



According to the foundation design of two types of towers commonly used in the construction of communication base stations in Hebei China Unicom in recent years, the author ...



Utilities face increasing demand for communications networks and widespread data coverage for more assets. Identified project objectives and best-practice planning guidelines help utilities execute new ...



The document discusses communication tower design, including structural analysis models used for steel tower design. It covers foundation design to resist loads, standards for tower design, codes for ...



A report from a structural engineer registered in South Carolina showing the tower antenna capacity by type and number, a certification that the tower is designed to withstand winds in accordance with ...



The mitigation objective of this Fact Sheet is to improve the resilience of communications towers, masts and antennas that support vital communications functions at critical facilities so they can continue to ...



Building telecom towers is a complex process that involves multiple stakeholders, including telecom companies, tower owners, regulators, and local authorities. Collaboration among these stakeholders ...



This case study focuses on the design of a telecom tower foundation using the engineering software program spMats. The tower under study is a 100 ft high and all members are hot-dip galvanized steel ...



ANSI/ASSP A10.48-2023 establishes criteria for safe work practices and training for personnel performing work on communication structures.

## Contact Us

For more information, pricing, or custom network solutions, please contact us:

Website: <https://www.hashherbcafe.co.za>

Email: [hello@hashherbcafe.co.za](mailto:hello@hashherbcafe.co.za)

Phone: +27 63 814 7295

Address: 15 Galaxy Road, Linbro Business Park, Johannesburg, 2065, South Africa

This document is for informational purposes only. Specifications subject to change without notice.

