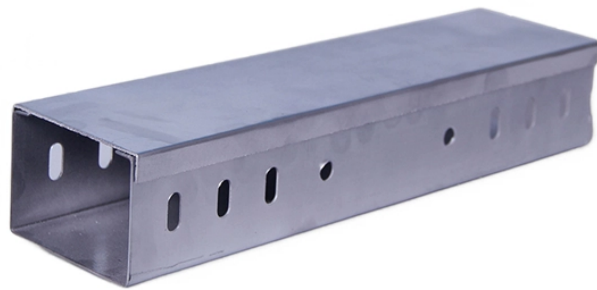


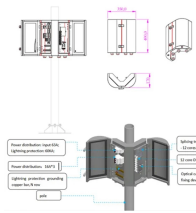
Service life of fiber optic cable junction boxes



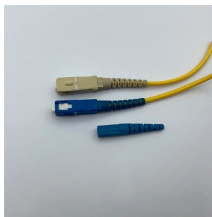
Service life of fiber optic cable junction boxes



As a global supplier of fiber-optic connectivity solutions, ZION Communication provides a complete portfolio of FTTH Terminal Boxes and Outdoor Splice Closures, engineered for reliability, ...



This article will explore the three core stages: fiber optic cable selection and installation, usage and maintenance, and aging assessment and replacement, offering practical strategies for ...



With proper installation, fibre optic cables have a service life of around 25 years, but in practice, can perform for far longer. A process called "stress corrosion" is the biggest threat to the ...



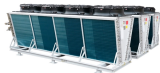
A fiber optic junction box, also known as a fiber optic distribution box or termination box, is a protective enclosure that facilitates the connection and management of fiber optic cables.



A fiber optic junction box, also known as a fiber optic distribution box or termination box, is a protective enclosure that ...



Underground vaults are used to link fiber optic cables or power, communications cables placed inside innerduct conduit. Orders are by truckload, call for details. The standard is to place an underground ...



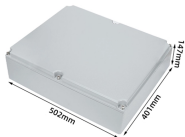
Discover the key differences between fiber terminal boxes and junction boxes to choose the right solution for your network setup.



Learn how often fiber optic cables need replacement, what affects their lifespan, and how to extend service life. Includes FTTH, ADSS, OPGW, ...



A quality fiber optic cable manufacturing process adds the proper strength elements and a protective polyethylene outer jacket that together protect the optical fiber from the environment and excessive ...



While routers, switches, and transceivers often have upgrade cycles of 3 to 5 years, properly installed and maintained fiber cabling systems can last 15 years or more — spanning ...



Learn how often fiber optic cables need replacement, what affects their lifespan, and how to extend service life. Includes FTTH, ADSS, OPGW, duct, and indoor fiber lifespan guidelines.



Proper lifecycle management ensures reliability, cost-effectiveness, and minimal environmental impact (2). In this article, we'll delve deeply into actionable recommendations tailored ...



Proper lifecycle management ensures reliability, cost-effectiveness, and minimal environmental impact (2). In this article, we'll delve deeply into ...

Contact Us

For more information, pricing, or custom network solutions, please contact us:

Website: <https://www.hashherbcafe.co.za>

Email: hello@hashherbcafe.co.za

Phone: +27 63 814 7295

Address: 15 Galaxy Road, Linbro Business Park, Johannesburg, 2065, South Africa

This document is for informational purposes only. Specifications subject to change without notice.

