

Server optical module installation location



Overview

Locate the SFP (or SFP+) slot on your networking device (e. These slots are often marked with an “SFP” label near them. Small Form-factor Pluggable modules (SFP module) are the workhorses of modern network connectivity, enabling flexible fiber optic or copper links between switches, routers, firewalls, and servers. Whether you're upgrading bandwidth, replacing a faulty unit, or reconfiguring your topology, knowing. This symbol indicates an infrared laser that transmits intensity-modulated light and emits invisible laser radiation or an LED that transmits intensity-modulated light. It's essential to understand how to properly install and configure an SFP module to ensure stable and efficient data transmission. The fiber-optic SFP+ / SFP28 modules contain a laser that is classified as a “Class 1 Laser. We often receive inquiries from customers asking if we have optical modules compatible with certain servers; on such occasions, our sales or FAE colleagues will always follow up with a question: which manufacturer's network adapter is used in the server?

Some customers are confused about this—they.

Server optical module installation location



When the optical module is removed, do not touch the gold finger of the SFP optical module to avoid damage to the SFP+ optical module. When inserting the SFP optical module, confirm the ...



As an essential component of network communication, optical modules have been widely used in various scenarios such as data centers, enterprise LANs, and WANs. An optical module is ...



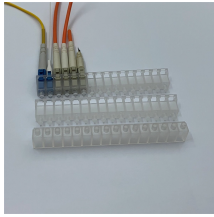
This document provides information about the installation, configuration, operation, and troubleshooting of the OptoStar II 1550 nm optical amplifier module. Taking single-slot (1-in, 1-out) and double-slot (1 ...



Installing and removing SFP transceivers is a straightforward task that requires careful handling to ensure optimal performance.



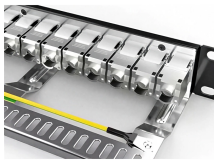
Identify the optical fibers to be connected to the optical module. Remove the dust caps from the optical fibers and insert the optical fibers to the bores of the optical module.



The QSFP-DD, QSFP, and SFP transceiver modules are hot-swappable and connect the electrical circuitry of the system with an optical external network. The following figure shows the QSFP-DD ...



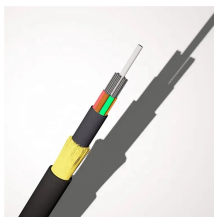
Install optical modules safely with ESD protection, proper handling, and dust control. Follow these steps to avoid damage and ensure network reliability.



Therefore, when configuring optical modules for servers, it is necessary to select the type of optical modules and confirm their compatibility requirements based on the network adapters installed on the ...



SFP and other optical modules are key components of any fibre optic network. They enable high-speed connections between active equipment and allow system scalability without the ...



These installation instructions provide overview and specification information for small form-factor pluggable (SFP/ SFP+/SFP28) modules, as well as instructions for installing and removing the modules.

Contact Us

For more information, pricing, or custom network solutions, please contact us:

Website: <https://www.hashherbcafe.co.za>

Email: hello@hashherbcafe.co.za

Phone: +27 63 814 7295

Address: 15 Galaxy Road, Linbro Business Park, Johannesburg, 2065, South Africa

This document is for informational purposes only. Specifications subject to change without notice.

