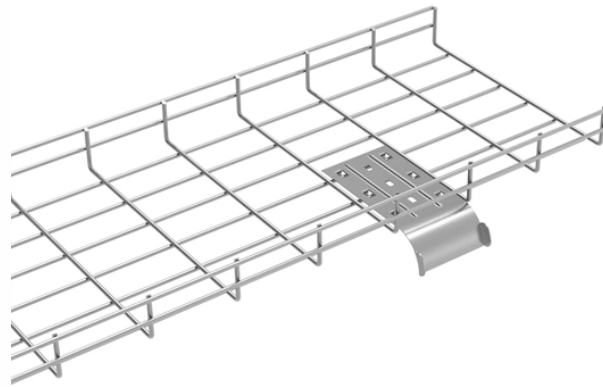


Selection of crossarms for cable trays



Overview

Explore top-rated Brooks Manufacturing crossarms & products. Galvanized crossarms for cable trays are typically made of Q235 low-carbon steel via rolling. 5mm, 3mm, and 4mm) based on load levels. For 3/4 of a century, BROOKS has been designing and manufacturing. This lightweight, strong, and versatile 7" stringing block will be a valuable addition to any line stringing inventory and provide dependable service under the extreme conditions common to the Line Construction Industry. Two buckles required for all banded brackets and attachments. Available in the braced, center mount, and alley arm. NOTE: Ground clip kit FGXAGC-6S available. These braces are essential for securely supporting insulators, service voltage wires, conductors, static wires, and down lead wires, along with critical equipment such as cutouts, arresters, transformers, reclosers, cable.

Selection of crossarms for cable trays



From impact-resistant end caps to patented internal bushings, Our Crossarms are built to last. Available in the braced, center mount, and alley arm applications, our Crossarms are sure to have products to ...



Wood crossarm brace is used for light duty support and stability of crossarms in telecommunications construction. Buy Pennington crossarms and we will ship same day.



Explore essential cable tray installation accessories for secure, stable, and safe cable management systems: hoisting frames, cross arms, wall brackets, connectors, grounding etc.



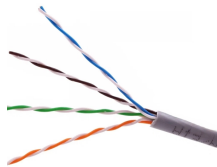
Discover Hubbell Power Systems' v-type brace crossarm braces, designed to support line construction and equipment, ensuring reliable and safe power distribution.



Electrical cross arms, also known as braces or traverses, are vital components of overhead transmission and distribution lines. They serve as support structures for insulators, conductors, and other electrical ...



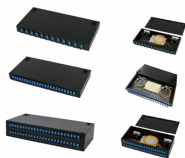
Explore top-rated Brooks Manufacturing crossarms & products. Compare durable wood vs. composite options trusted for quality, strength & long-term performance.



PLS-POLE gives users the options to model cross arms with a high degree of accuracy as material properties, connection codes, and loading geometry can all be specified and analyzed through non ...



Galvanized crossarms for cable trays are typically made of Q235 low-carbon steel via rolling. Their cross-sectional forms are mostly U-shaped or L-shaped, and their thickness is classified ...



MPS wood crossarm braces are design engineered to support wood crossarms to provide durability, strength, and extended service life. MPS wood crossarm braces have better insulation properties ...



We have produced a large range of electrical crossarms and fittings for utilities companies around the world; with over 200 designs currently deployed and an expert in-house design team.

Contact Us

For more information, pricing, or custom network solutions, please contact us:

Website: <https://www.hashherbcafe.co.za>

Email: hello@hashherbcafe.co.za

Phone: +27 63 814 7295

Address: 15 Galaxy Road, Linbro Business Park, Johannesburg, 2065, South Africa

This document is for informational purposes only. Specifications subject to change without notice.

