

Selection Methods for Direct-Buried Optical Cables

02

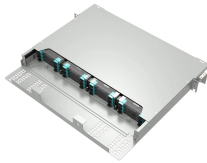
High Quality Material



High hardness to resist external impact, Good Shaping Performance, Good Look and Anti-rust



Selection Methods for Direct-Buried Optical Cables



How it Works: This method involves installing fiber optic cables inside protective conduits (ducts), typically made of HDPE or PVC. These ducts are buried in trenches, creating a secure ...



Direct buried fiber optic cable installation practices are essentially the same as those used for placing copper cable. The following methods of direct burial of fiber optic cables will be addressed: plowing ...



Learn how to install underground fiber optic cables safely and efficiently. Explore trenching, conduit selection, direct burial methods, splicing, ...



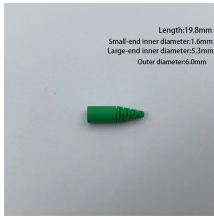
Personnel feeding cable into a feed-chute must make sure that they do not position themselves inside a cable loop. Hearing protection may be required by vehicle operators. Pre-ripping provides a safety ...



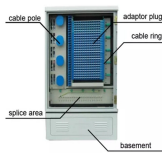
This guide explains the common cable constructions, when to choose direct-burial, a practical installation workflow, and the best practices that minimize downtime and future repair costs.



The document outlines guidelines for the direct burial installation of fiber optic cables, detailing two primary methods: trenching and plowing. Trenching allows for better control and depth management, ...



Learn about fiber optic cable installation methods. Understand direct burial options.



Direct buried fiber optic cable installation practices are essentially the same as those used for placing copper cable. The following methods of direct burial of fiber optic cables will be addressed: plowing ...



Confidently choose between direct burial, duct, trough and micro-duct for your underground fiber project. This practical guide covers cable structures, trench depth, mechanical ...



Recommended technical requirements are detailed by reference to IEC 60794-3-11 on outdoor optical fibre cables for duct, directly buried, and lashed aerial applications. Changes and ...

Contact Us

For more information, pricing, or custom network solutions, please contact us:

Website: <https://www.hashherbcafe.co.za>

Email: hello@hashherbcafe.co.za

Phone: +27 63 814 7295

Address: 15 Galaxy Road, Linbro Business Park, Johannesburg, 2065, South Africa

This document is for informational purposes only. Specifications subject to change without notice.

