

Selection Guide for Island-Grade CFP SFP



Overview

This guide provides a detailed, practical comparison of SFP, SFP+, and SFP28 transceiver technologies. Clarify real-world compatibility rules and deployment. An engineer-focused, “just tell me what to choose” guide to transceiver selection with architecture, power budget, compatibility, and upgrade plan — designed for 25G/100G today and 400G/800G tomorrow. 25G is the new 10G; 100G (QSFP28) is the workhorse; design for migration plans to 400G/800G. At the heart of modern fiber optic networking, you'll frequently encounter the SFP (Small Form-factor Pluggable) transceiver. Outline objective. What is an SFP Transceiver?

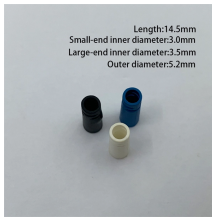
This essential guide covers the difference between SFP, SFP+, and QSFP, explains speed classifications (1G, 10G, 400G), and details key buying factors like DOM and third-party compatibility.

Cambium_Networks_data_sheet_SFP_Guide. Basic SFP supports speeds up to 1.25 Gbps and are ideal for legacy systems or low-bandwidth applications.

Selection Guide for Island-Grade CFP SFP



CXR SFP modules are based on industrial grade components to deliver higher reliability and to enable extended operating temperature range in any host equipment and integration conditions.



This comprehensive technical guide targets network architects, data center engineers, and infrastructure managers seeking actionable clarity on optical transceiver selection.



Compare all optical transceiver types — SFP, SFP+, SFP28, QSFP+, QSFP28, QSFP-DD, XFP, CFP — with speeds, form factors, and a buying guide for data center and enterprise ...



The Small Form-Factor Pluggable (SFP) is a crucial component in any fibre optic communication system. One of the major challenges when dealing with SFPs is determining which type to use, ...



In this guide, we break down the differences between these modules and help you make the best decision for your infrastructure—whether you're upgrading a legacy system, increasing the ...



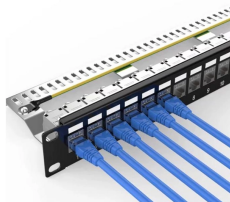
Compare SFP vs. SFP+ vs. SFP28 transceivers, including speed, compatibility, use cases, and upgrade considerations for 1G, 10G, and 25G networks.



Attached is a handy guide for selecting SFP modules for PTP, PMP and cnRanger product lines. [Cambium_Networks_data_sheet_SFP_Guide.pdf](#) (1.3 MB)



This guide demystifies SFP modules, exploring their design, types, key differences from related modules (like SFP+, SFP28, and QSFP), and actionable tips for selecting the right one for ...



A 2026-ready, engineer-focused guide comparing SFP, SFP28, QSFP28, QSFP-DD and OSFP transceivers. Learn decision rules, deployment use cases, cost/risk factors, and compatibility ...



Learn what an SFP module is, how SFP, SFP+, SFP28, and QSFP differ, and how to choose the right module for speed, distance, fiber type, and compatibility.

Contact Us

For more information, pricing, or custom network solutions, please contact us:

Website: <https://www.hashherbcafe.co.za>

Email: hello@hashherbcafe.co.za

Phone: +27 63 814 7295

Address: 15 Galaxy Road, Linbro Business Park, Johannesburg, 2065, South Africa

This document is for informational purposes only. Specifications subject to change without notice.

