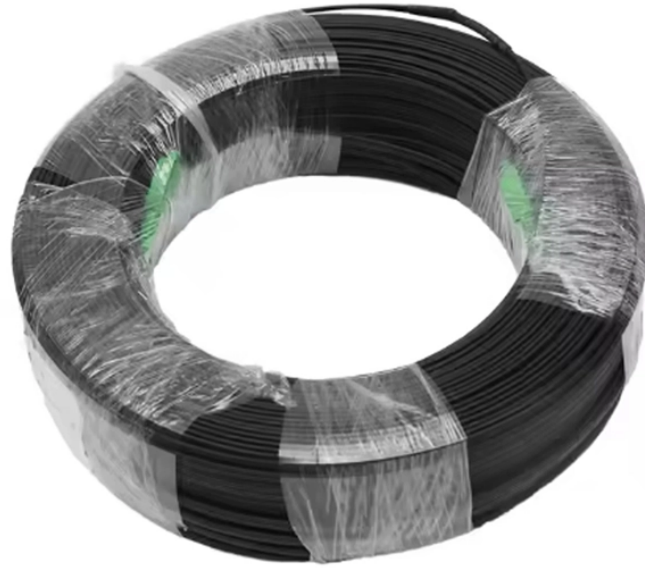


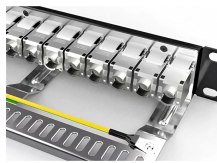
# **Secondary distribution box with tertiary leakage protection**



## Secondary distribution box with tertiary leakage protection



This subway distribution system is the station's lifeline, ensuring that all electromechanical equipment, including lighting, ventilation, air conditioning, escalators, ticketing ...



This document provides specifications, ordering information, illustrations, and application instructions for the various sizes of non-concrete and precast concrete enclosures used in PG& E electric ...



The third-level distribution box is the control unit directly connected to the electrical equipment. It serves as the final stage of power distribution, ensuring that each device has its own dedicated circuit. This ...



Secondary Distribution Box: Serves each floor or building as needed. Tertiary Distribution Box: The final connection box for each electrical appliance, which can be movable or fixed. Residual ...



Tertiary Distribution System: Connects to end-use equipment via switch boxes, forming a three-tier power distribution system. Incorporates a "two-tier protection" strategy: Residual current devices ...



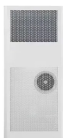
Discover the robust selection of secondary pedestals at Hubbell, designed to enhance and secure your power distribution needs. These secondary pedestals are built to withstand harsh environments, ...



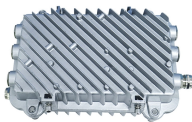
The secondary box adopts the design of inner and outer doors, the appearance is plastic sprayed, safe and beautiful, and the rainproof box top is suitable for field work.



Third level distribution box: refers to the final junction box of each electrical appliance, which can be movable and fixed. Remember that the leakage protection switch is the last one, and ...



Secondary Distribution Box: Distribution boxes for each floor or building (as needed). Tertiary Distribution Box: The final connection box for electrical devices, which can be movable or ...



In addition to installing a leakage protector in the final switch box, a primary leakage protector should also be installed in the upper-level distribution box or main distribution box, forming an overall two ...

## Contact Us

For more information, pricing, or custom network solutions, please contact us:

Website: <https://www.hashherbcafe.co.za>

Email: [hello@hashherbcafe.co.za](mailto:hello@hashherbcafe.co.za)

Phone: +27 63 814 7295

Address: 15 Galaxy Road, Linbro Business Park, Johannesburg, 2065, South Africa

This document is for informational purposes only. Specifications subject to change without notice.

