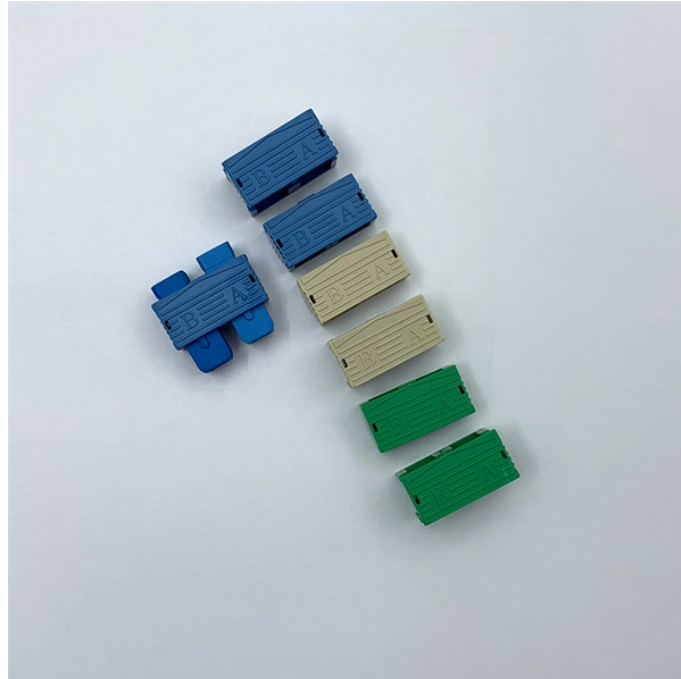


# Secondary distribution box with one leakage and one connection



## Overview

This solution consists of highly integrated gas-insulated outdoor-mounted bay units. One bay unit includes circuit breaker, disconnecter(s), measuring transformers and the local control and interface cabinet in one transportation unit. It is specially designed for the special situation of the project construction site and meets the relevant construction power specifications and standards of the. This document represents the minimum requirements and specifications for the installation of the electrical underground distribution systems fed from padmounted transformation, serving Secondary Service Accounts, to be transferred to Oncor Electric Delivery Company ownership. REFERENCES This. Designed for local control with strict safety standards, such as "one device, one circuit breaker, one residual current device, and one box. " May include both fixed and portable boxes, ensuring individual circuit protection to prevent electrical hazards. The principle of "one machine, one switch, one leakage, one box, one. Distribution systems encompass power lines that transport energy from the transmission network or other sources to consumers, along with the necessary equipment for switching, measurement, control, monitoring, and finally protection.

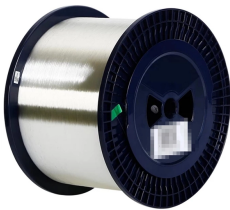
## Secondary distribution box with one leakage and one connection



The principle of "one machine, one switch, one leakage, one box, one lock" strictly prohibits the same switchgear from directly controlling two or more electrical devices (including ...



This document represents the minimum requirements and specifications for the installation of the electrical underground distribution systems fed from padmounted transformation, serving Secondary ...



To enhance reliability, power is sourced from two different inputs and distributed to two interconnected sections via a bus coupler. The switchgear ...



The final connection point for end-use devices, delivering 220V (single-phase) power. Designed for local control with strict safety standards, such as "one device, one circuit breaker, one residual current ...



secondary unit substation is a close-coupled assembly consisting of enclosed primary high voltage equipment, three-phase power transformers, and enclosed secondary low voltage equipment.



One bay unit includes circuit breaker, disconnector(s), measuring transformers and the local control and interface cabinet in one transportation unit. The unit has been factory-assembled and tested, offering ...

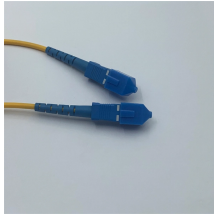
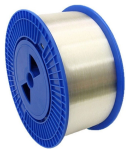


Figure 11 depicts a single distribution transformer with a single service feeding a single customer, which is frequent in rural locations where customer ...



Install the enclosure on a twelve-inch base of one-inch rock to aid in the drainage of the unwanted water, align the conduits at either end to achieve a nearly straight through pull and install end bell fittings on ...



Browse power distribution boxes with circuit breaker protection and multiple outlet configurations. Shop durable solutions for construction and emergency use.



The principle of "one machine, one switch, one leakage, one box and one lock", that is, it is strictly prohibited for the same switchgear to directly control two or more electrical equipment (including ...



An electrical sub panel, also known as a sub panel box or breaker box, is an essential component of an electrical system. It serves as a secondary distribution point for electricity, receiving power from the ...



To enhance reliability, power is sourced from two different inputs and distributed to two interconnected sections via a bus coupler. The switchgear utilized here comprises eight panels ...

## Contact Us

For more information, pricing, or custom network solutions, please contact us:

Website: <https://www.hashherbcafe.co.za>

Email: [hello@hashherbcafe.co.za](mailto:hello@hashherbcafe.co.za)

Phone: +27 63 814 7295

Address: 15 Galaxy Road, Linbro Business Park, Johannesburg, 2065, South Africa

This document is for informational purposes only. Specifications subject to change without notice.

