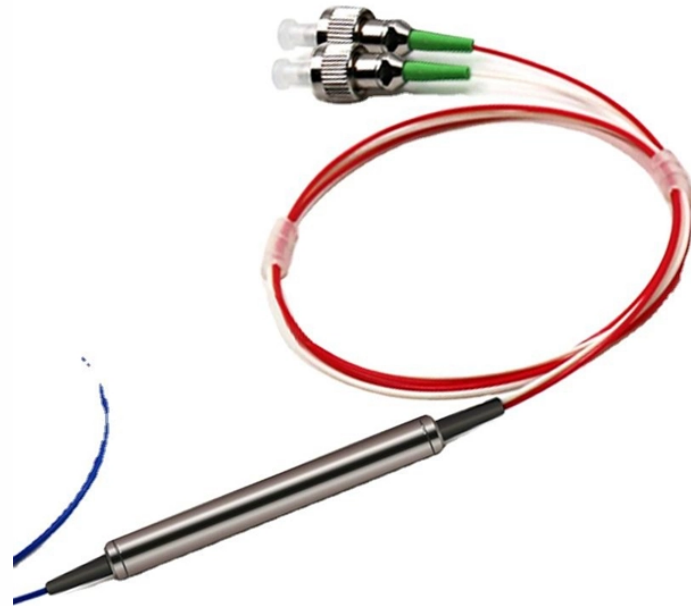


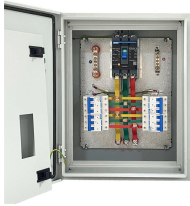
Secondary Distribution Box Protection Separation



Secondary Distribution Box Protection Separation



To prevent reverse power flow through the transformers, special network protectors with sensitive reverse power relays are used. Spot networks allow multiple component failures to occur ...



To prevent reverse power flow through the transformers, special network protectors with sensitive reverse power relays are used. Spot networks ...



Abstract: The design, installation, and protection of wire and cable systems in substations are covered in this guide, with the objective of minimizing cable failures and their consequences.



Should the protection cable tray not allow for any separation between the fibres and the copper conductors due to the large quantity or size of copper conductors, larger trays shall be used, or ...



As a result of locating power transformers and their close-coupled secondary switchboards as close as possible to the areas of load concentration, the secondary distribution ...



Today, advancements in relaying capabilities offer several alternatives such as the centralization of protection and control and the digitization of secondary systems. In this paper, we provide an ...



18.4 Secondary substations contained in GRP enclosures, fenced enclosures or stand-alone brick buildings shall be separated from other buildings by at least 5m unless such buildings are...



This document represents the minimum requirements and specifications for the installation of the electrical underground distribution systems fed from padmounted transformation, serving Secondary ...



The substation is protected from faults on feeder and tie lines by circuit breakers and/or reclosers located inside the substation. Most of the faults are permanent on an underground distribution ...



Learn best practices for substation secondary systems design—covering protection and control, DC systems, relay panels, CT/VT circuits, redundancy, and compliant substation engineering.



Two new sections were added to address the impact of organizational considerations on distribution protection, and to summarize emerging technologies and applications relevant to distribution protection.

Contact Us

For more information, pricing, or custom network solutions, please contact us:

Website: <https://www.hashherbcafe.co.za>

Email: hello@hashherbcafe.co.za

Phone: +27 63 814 7295

Address: 15 Galaxy Road, Linbro Business Park, Johannesburg, 2065, South Africa

This document is for informational purposes only. Specifications subject to change without notice.

